

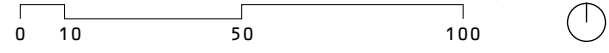
ENTRY NUMBER #53303298



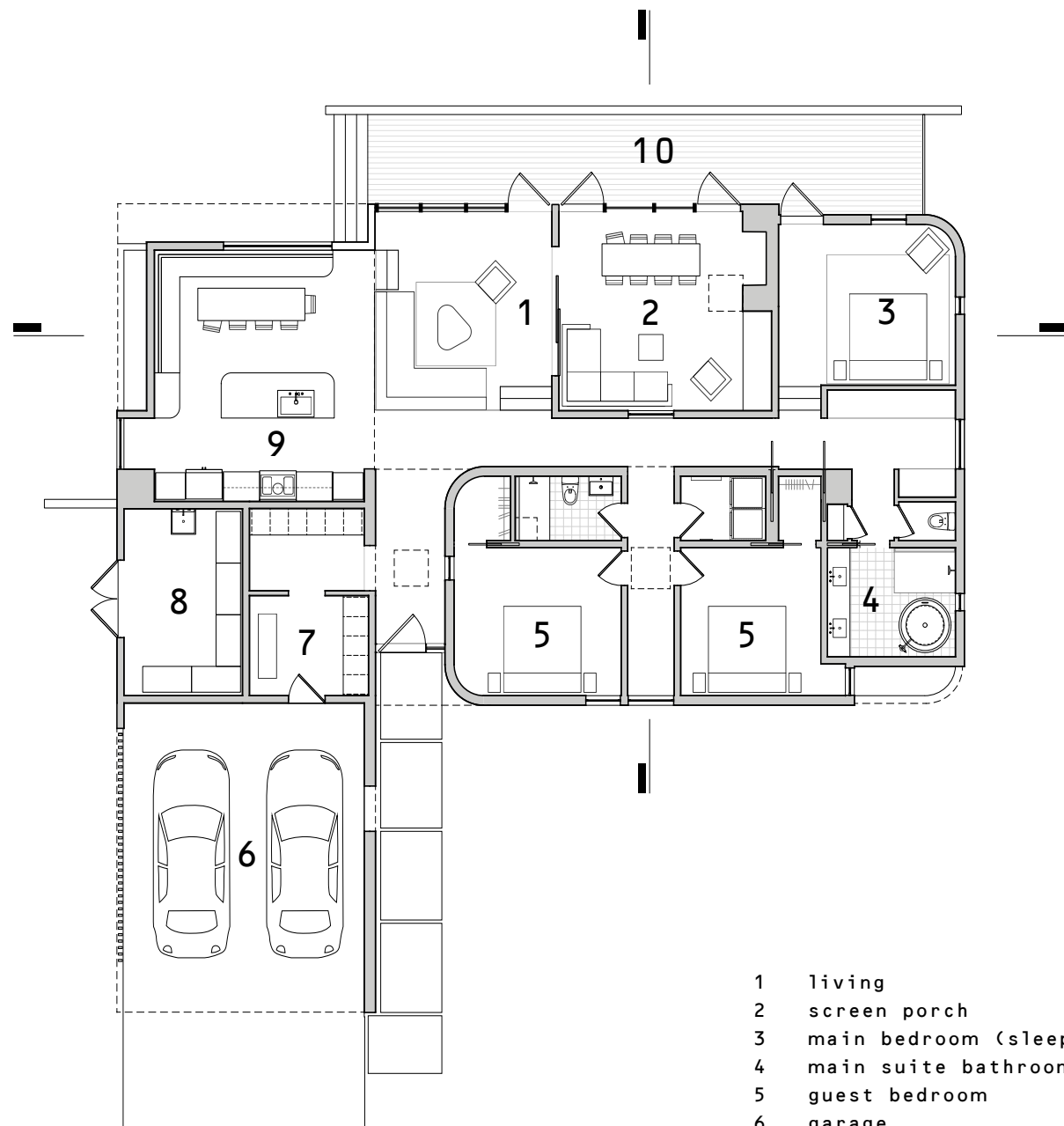
ACBD RESIDENCE



SITE PLAN

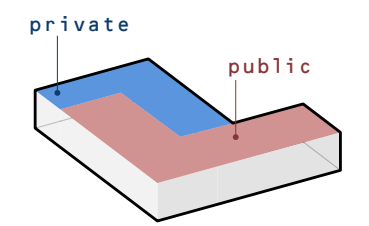




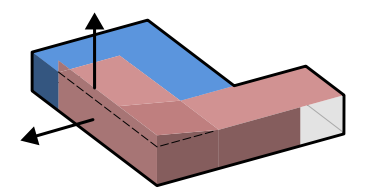


- 1 living
- 2 screen porch
- 3 main bedroom (sleep chamber)
- 4 main suite bathroom
- 5 guest bedroom
- 6 garage
- 7 entry
- 8 storage
- 9 kitchen
- 10 porch

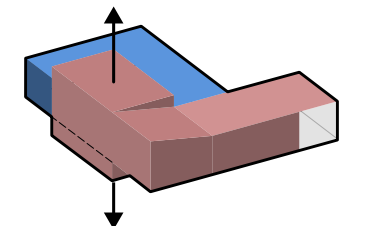
FLOOR PLAN



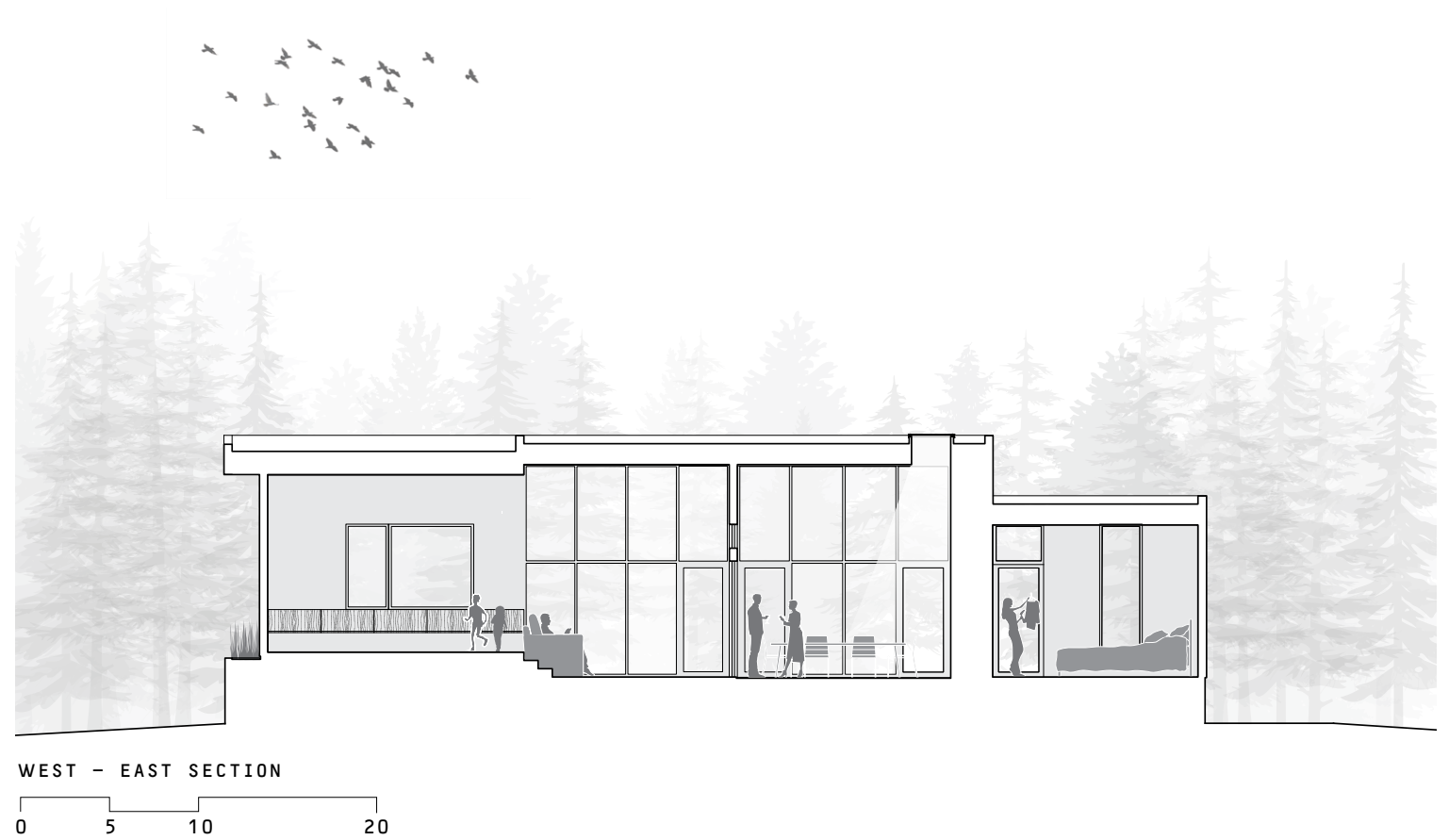
PROGRAM



OPEN



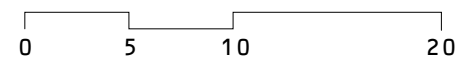
EXPAND







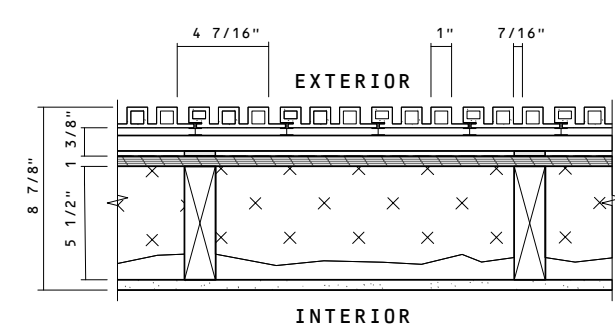
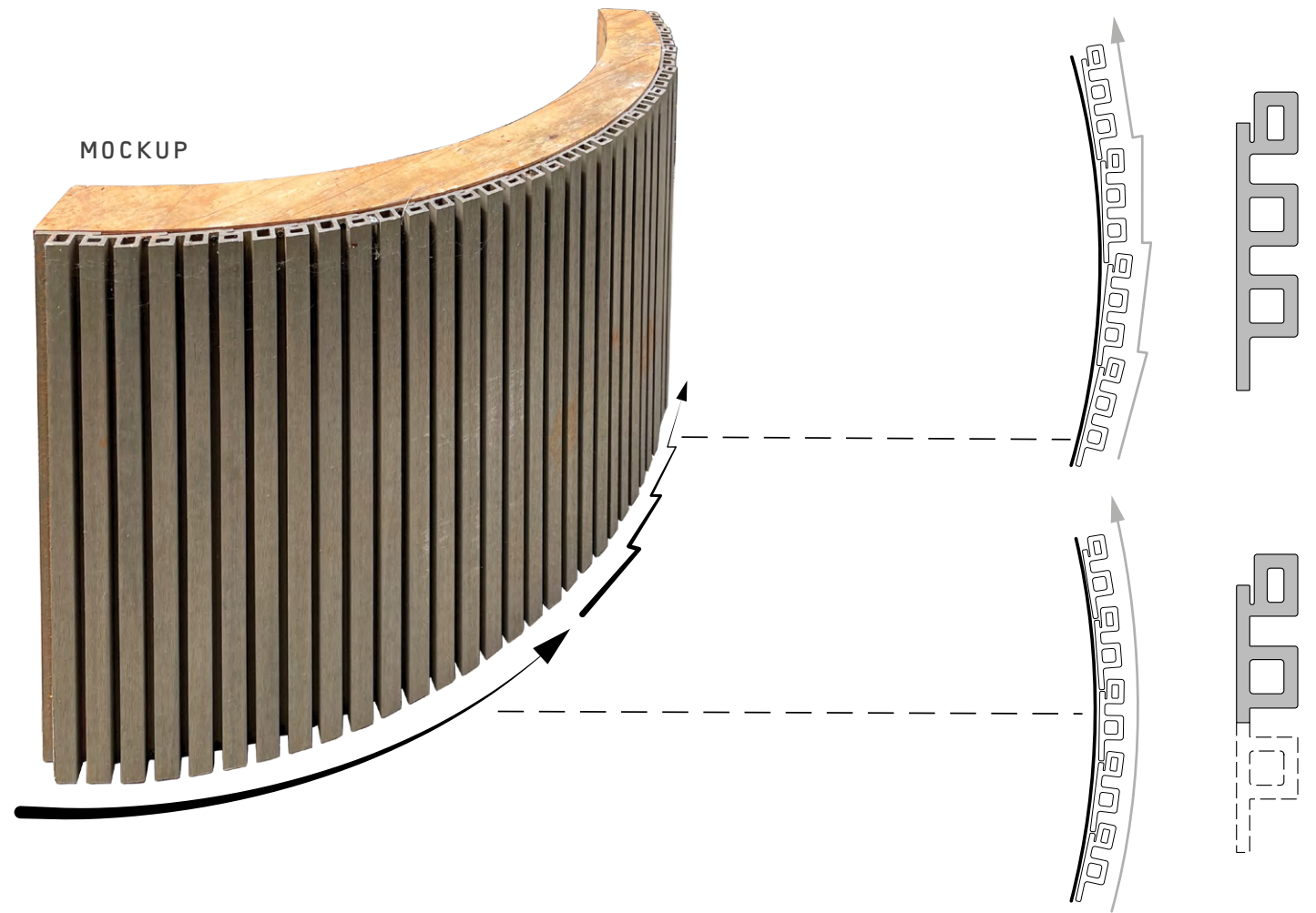
SOUTH - NORTH SECTION





(SLEEP CHAMBER)





- vertical composite cladding
- hidden fastener clip system
- 1x4 horizontal wood strapping
- vaporshim
- zip system sheathing
- 2x6 stud wall w/ open cell foam insulation
- 1/2" ptd gwb u.n.o.

Composite siding was used in a rain screen configuration to provide a low maintenance, high efficiency, cladding. To achieve the curves, the stock lengths were altered from a three square to two square section.





