

53214933_RESIDENTIAL



Arbutus is on a suburban lot in the Piedmont and is fit to the contours of a hillside, finding privacy on a pie-shaped lot via a tri-spoked plan. Built on the footprint of an old ranch house, the house is tucked behind a row of majestic white and red oaks. The three-story program only ever rises two stories above grade as the house form spills down the slope. The wood cladding will be allowed to age naturally. A secret roof garden is hidden within the “husk” of the curvaceous form, and the house is powered almost entirely by photovoltaic energy.

main level plan



upper level plan



53214933_02

The plan is organized into three spokes - one for living, one for sleeping, and one for utility. The living spoke has kitchen, dining, office, and formal living areas above a basement den and office (basement not shown). The bedroom spoke has two bedrooms below an upper level primary bedroom suite that opens to the rooftop garden. The working spoke contains a workshop, the carport, and mudroom/laundry. The program is shrouded in a voluptuous wooden skin, with light wells placed to create interplay between levels.

- 01 carport
- 02 deck
- 03 lower patio
- 04 front door
- 05 kitchen
- 06 dining (basement den below)
- 07 living (basement office below)
- 08 deck
- 09 office
- 10 scullery
- 11 mudroom/laundry
- 12 WC

- 13 guest bedroom
- 14 guest bathroom
- 15 kid's bedroom
- 16 kid's bathroom
- 17 workshop
- 18 primary bedroom
- 19 deck
- 20 roof garden
- 21 primary bath
- 22 primary closet
- 23 kitchen below
- 24 photovoltaics

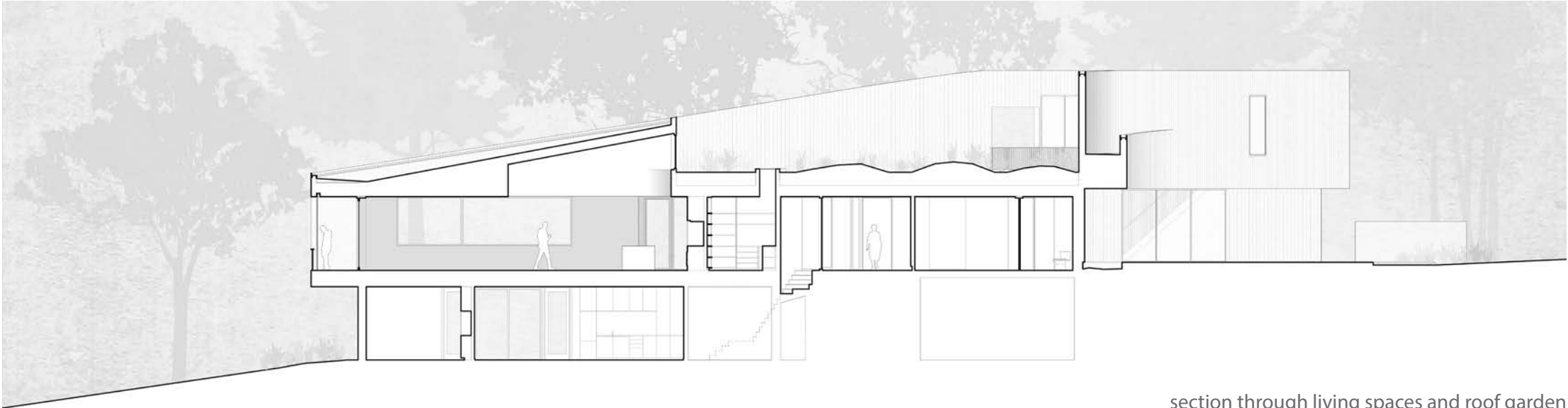


elevated front view



The house is sited to preserve existing trees and find privacy from neighbors. A series of site walls bound the main area of site development, and the form of the house mimics the gentle Piedmont hillside.

53214933_03



section through living spaces and roof garden



entry walk

The front door is tucked deep in the folds of the skin, under a light well offering a hint of the roof garden hidden within the form of the house. The arrival space is thin and opens fully to a wide view of the back yard forest. To the right of the entry is another reentrant exterior space and light well. To the left is an open hallway leading to the main living space.



entry sequence



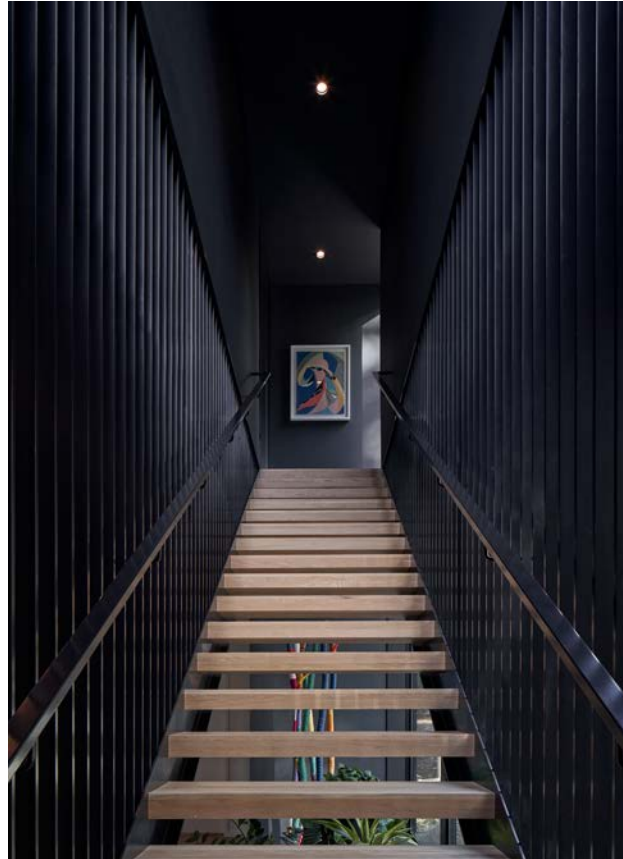
main living space

The main living space has a panoramic view of the rear yard and a directed view of the forest horizon from an elevated deck at the end of the room. The deck is accessed via a sliding door that can fully open the wall. A broad retractable screen transforms the entire room into a screened porch on nice days. The street-facing wall is a cabinet that contains the office. A change in ceiling height above the kitchen offers a view of the roof garden.





Private areas of the house are separated from public spaces by a circuitous hall that meanders between the reentrant folds of the main level plan. The primary bedroom suite is upstairs, accessed by an open stair that hangs into the hall from the structure above. The stair space is a dark, long threshold with a view of the roof garden.





The primary bedroom is nestled within the “husk” of the house, with a view of the rear forest and the roof garden - an elevated refuge for the owners.



The exterior skin of the house is a thermally-modified wood rainscreen that reaches to the sky. The upper level is stained, and the lower level, where people experience the house more closely, is a warmer, natural tone.



The back wall of the house is more open to the yard, with a grounded deck and overhead plane that create a sheltered vantage point over the back yard and into the forest. The native landscape is left wild.



The front of the house is solid, an interwoven landscape of site walls, reentrant ground level folds, and sweeping forms above that greets the neighborhood as a sculptural volume.

