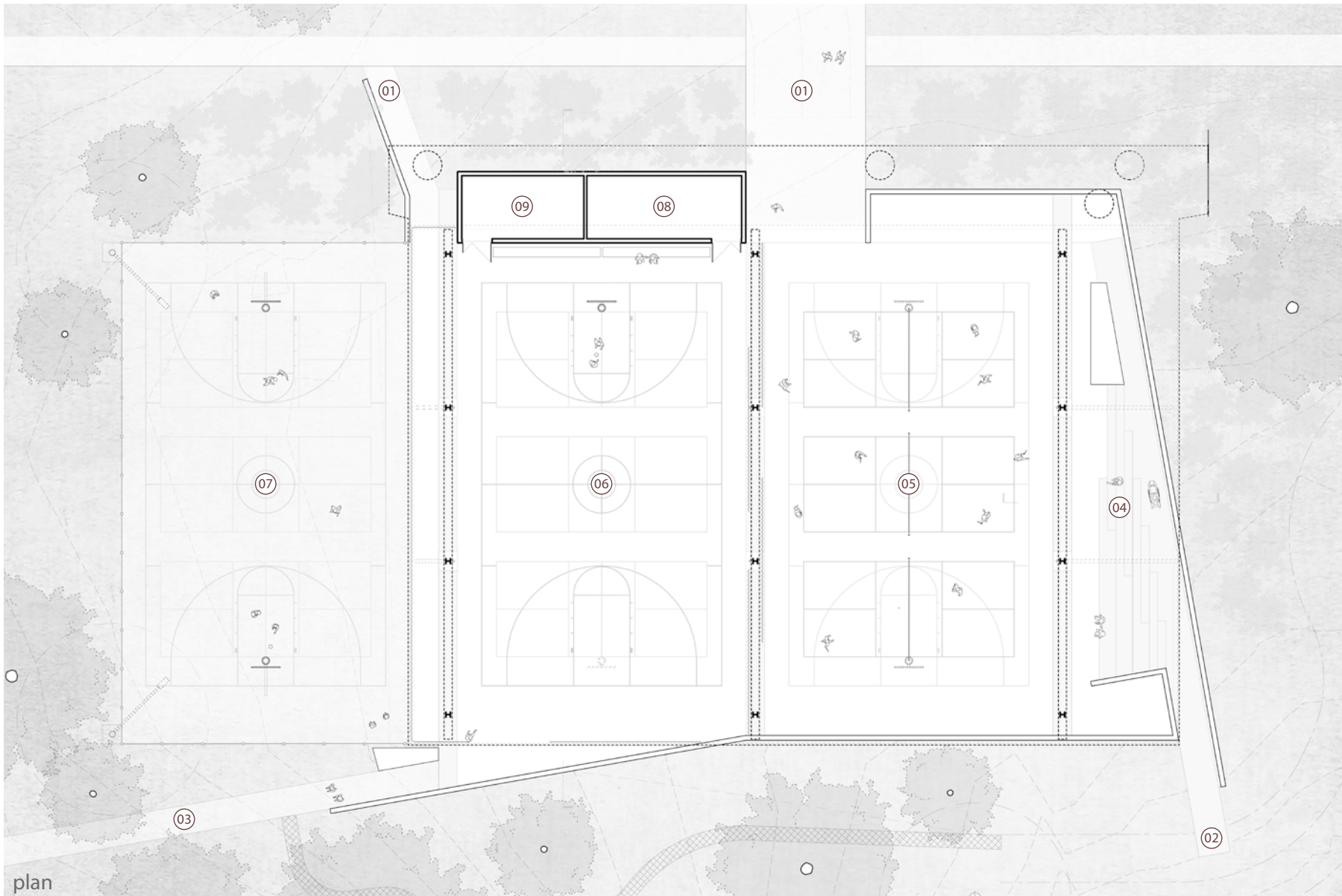


53230608\_LARGE PROJECT



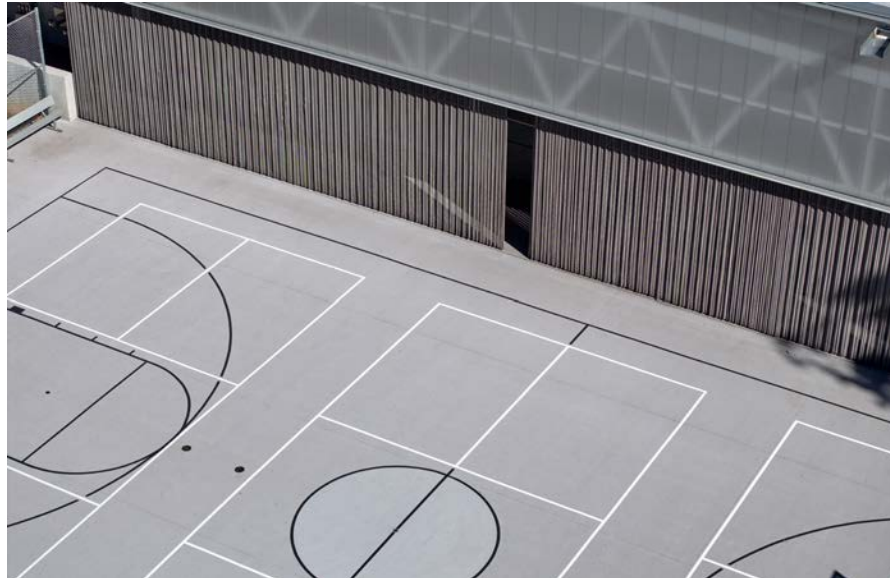
Baileywick Park improvements include new parking and landscape, improvements to existing bathrooms, a new dog park, and new basketball and pickleball facilities covered by a large shelter. The shelter is carefully sited and partially sunken to mitigate the scale of the intervention in the park. The shelter is lifted above the sloping site on twelve columns and wrapped in a translucent skin to let light in during the day and glow at night. In addition to accommodating basketball and pickleball, the shelter has become a popular venue for many other events, including roller sports, markets, and dance.



Entry to the shelter is from a new parking area to the north, a ramp to the southeast that leads to existing bathrooms, shelters, and fields, and a path to the southwest that connects to the county greenway. This ramp is blended with seating - a "stramp" - to make a gathering space for watching games. *Maille* curtains separate each bay of courts to keep balls from crossing adjacent courts when multiple games are played at once. The westernmost courts are uncovered. A tile-clad support volume anchors the north side entry.

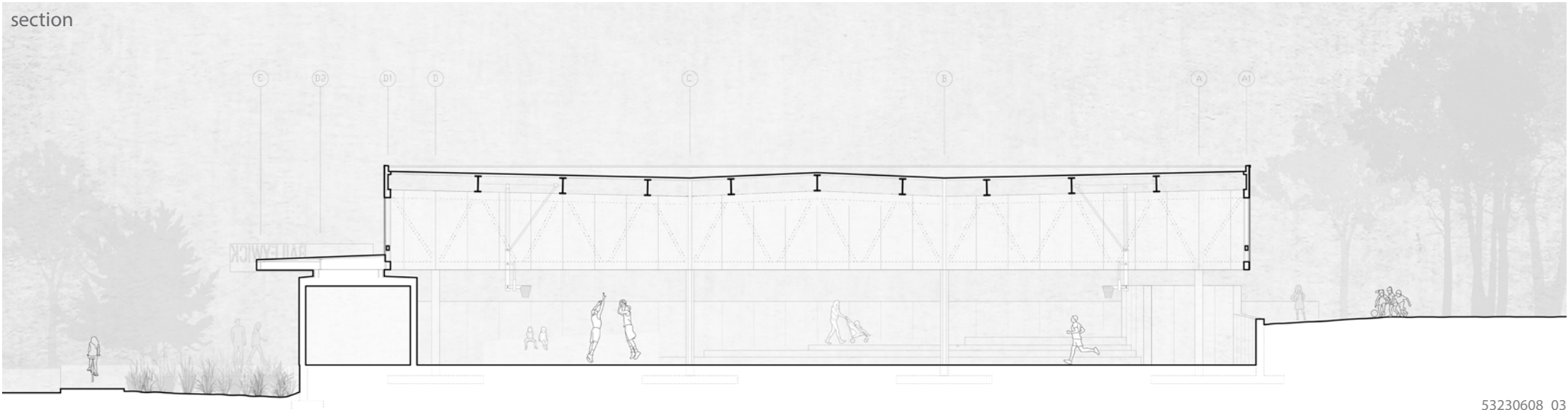
- 01 parking entry
- 02 park entry
- 03 greenway entry
- 04 seating "stramp"
- 05 covered courts
- 06 covered courts
- 07 open air courts
- 08 storage
- 09 utility





The new shelter is in close proximity to several other existing park buildings and recreational areas. The shelter is much larger than preexisting structures on the site, so it is partially sunken to mitigate the scale.

section





TANGULA

BAILEYWICK

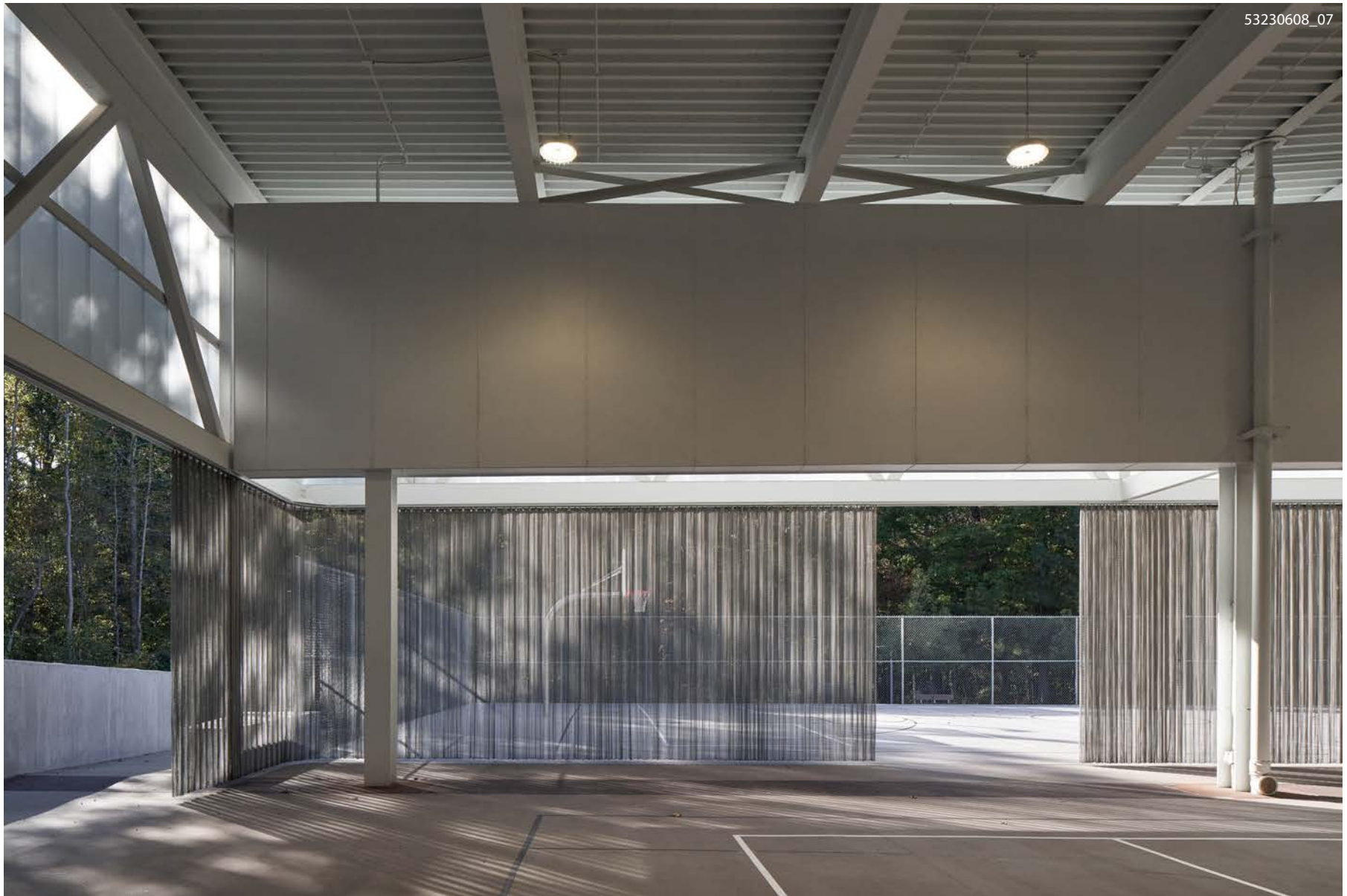
A series of site walls retain the slope and bound the courts under the structure above. These walls move freely through the landscape and allow natural areas to slide under the shelter, blurring the lines between structure and landscape.





The “stramp” space connects the courts to amenities in the larger park and provides a place to watch games.

The shelter is wrapped in a translucent skin to admit natural light. Each layer of the structure is stacked, with gaps between allowing light to find its way into spaces overhead. Bays of courts are separated by *maille* curtains to prevent interference from errant shots. Lights, conduit, and roof drains are all carefully coordinated with the structure.





The entry awing reaches beyond the site walls and is punctuated by four oculi.

The westernmost courts are open air, with the shelter providing a quiet backdrop for games.





In the evening, the skin and curtains emit a glow that expresses the structure of the shelter and shows activity within.



The shelter is a simple form lifted above the landscape that possesses a layered depth activated by changing light conditions throughout the day.

