

53276607



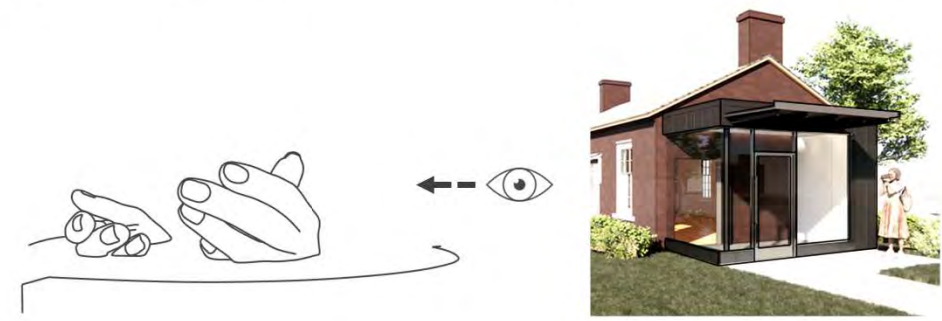
View from the northeast corner of the site facing the newly created vestibule entry.



New openings in interior walls allow for circulation throughout the 1000 SF floorplan.



Oak Row is part of Davidson's historic quad and is located immediately across from the recently completed Hank Willis Thomas *With These Hands* sculpture. The vestibule was designed to complement and draw focus to the sculpture.





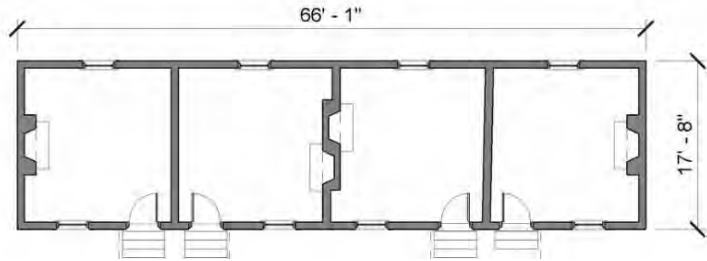
View from the northwest corner of the site shows new vestibule and sculpture beyond.



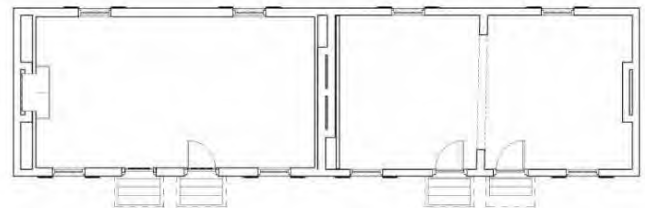
HISTORY

The Oak Row dormitory, and Elm Row across the lawn from it, are the last remaining original structures constructed when the College was founded in 1837. There were originally 2 of these dormitory buildings one each side of the original quad. Records indicate the following uses of Oak Row during its existence.

- 1837 – 1916** Student dormitory
- 1916 – 1928 Fraternity meeting rooms.
- 1928 – 1950 Offices of student publications and organization
- 1950 – 1969 Music department Office
- 1969 – 1993 Art Dept classroom, Music Dept Practice Room
- 1993 – ??? Music Dept Practice Rooms
- ??? – 2025 Unused classroom (south), IT workroom (north)
- 2025 – ??? Exhibit

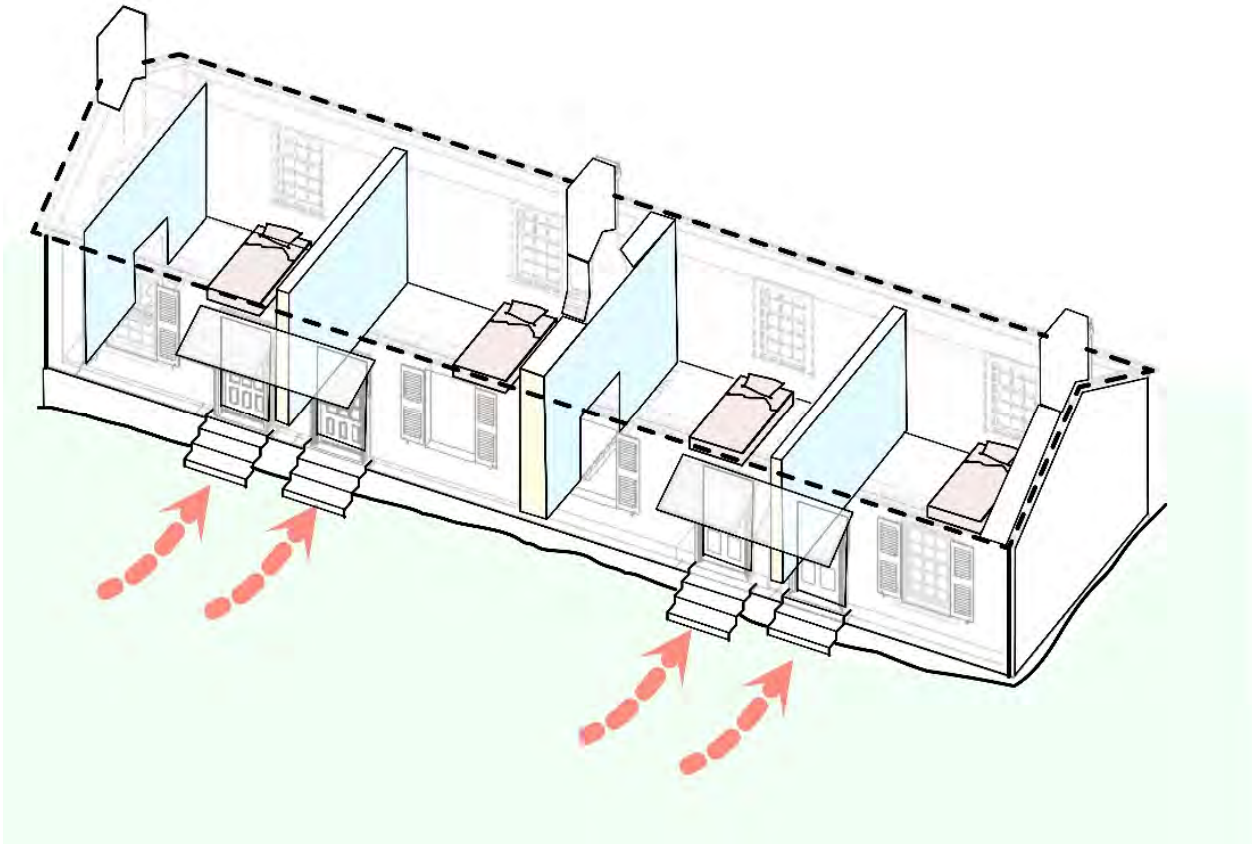


Original 1837 Dormitory Plan

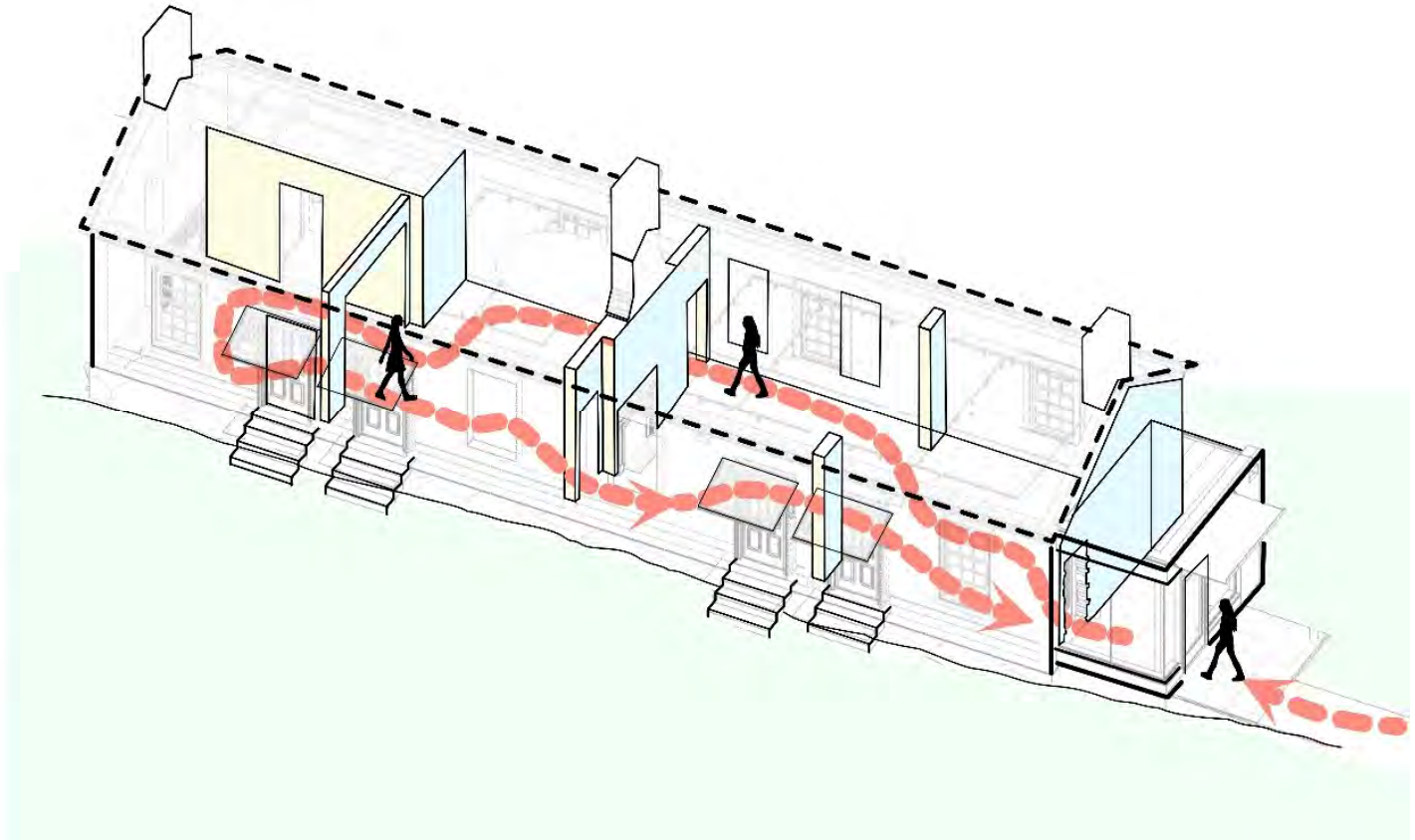


2025 Existing Plan

TRANSFORMATION



Originally, the 1000 SF building was 4 individual dormitory rooms, each accessed from the exterior via steps.



To maintain the historic façade, while providing a new accessible entry, the decision was made to add a new vestibule to the north elevation. The chosen location works with the existing topography to eliminate the need for a ramp. New openings in the interior walls allow continuous circulation throughout the floor plan.

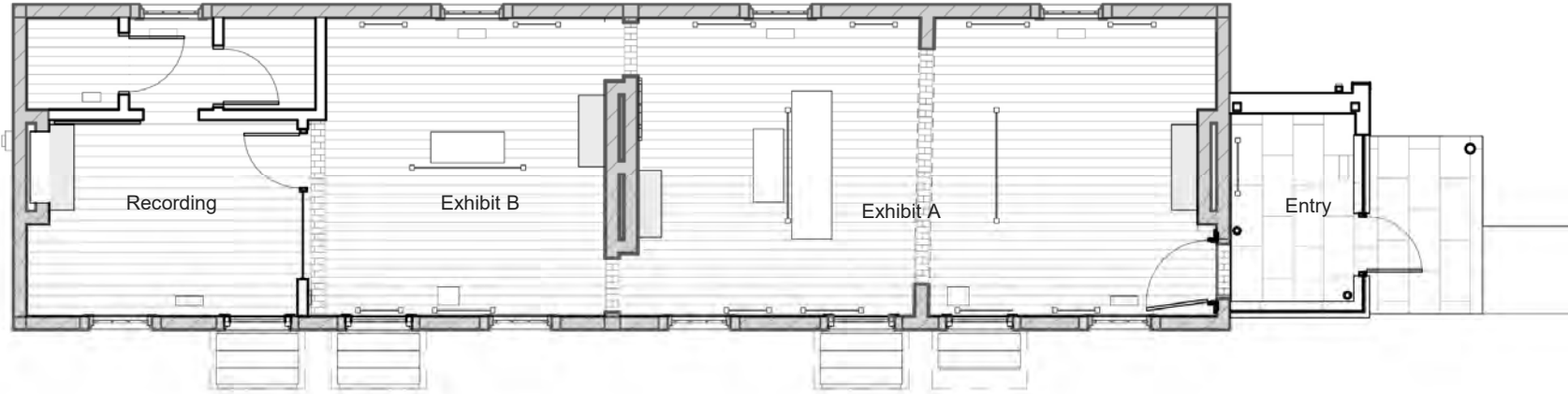


Images of the north elevation and interior during demolition. Floors were removed due to termite damage. New openings were created in the existing brick walls with great care. Fireplaces were opened and restored.

DISCOVERY

Much of the design was guided by discovery during the demolition phase of construction. A portion of the work was thus not determined by a static set of documents, but rather by the building's own bones that were uncovered and revealed. As the modern-day materials were removed, the original plaster, floors and fireboxes were uncovered and evaluated for their condition and repurposed wherever possible. One of the most exciting discoveries was a doodle drawing on the original plaster walls. This piece was carefully stabilized and preserved in situ, and now plays an important role in the exhibit, connecting visitors to the original inhabitants.





Plan View



East Elevation



North Elevation



A newly added vestibule serves multiple purposes: allowing selected exhibit items to be visible from the exterior, creating an accessible entry and attracting visitors to enter the building. The design both complements and contrasts the historic structure.



Vestibule bluestone flooring was selected for its tactile solidity and ability to be installed on both the interior and exterior, creating a material continuity that pulls the visitor inward. The structural framing at the vestibule was carefully coordinated to allow the ceiling height and glazing to align with the historic windows on the east elevation.



Transparent panels offer an ephemeral quality to the interior while maintaining an open and airy atmosphere within the small space



Reclaimed bricks from demolition were used to repair and stabilize the new openings and uncovered original fireboxes.