

53199252

GORDON HALL RENOVATION + FLEXSPACE

Harvard Medical School

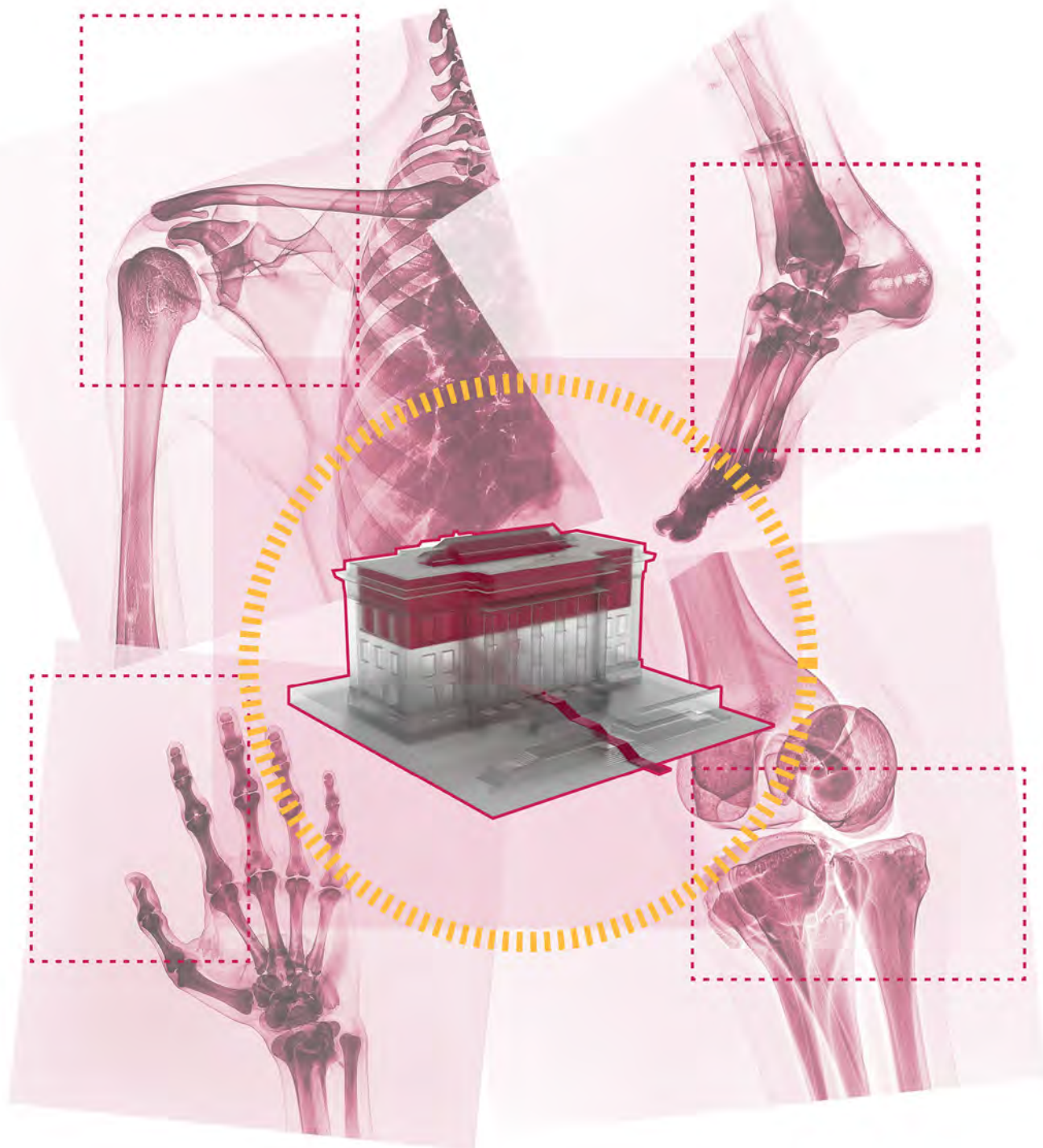
Boston, Massachusetts





A precise incision of contemporary work culture into the heart of the campus' **most historic building** — Harvard Medical School's Gordon Hall stands as a bold juxtaposition that anchors the school's dispersed administrative functions within a single, **unified space**.

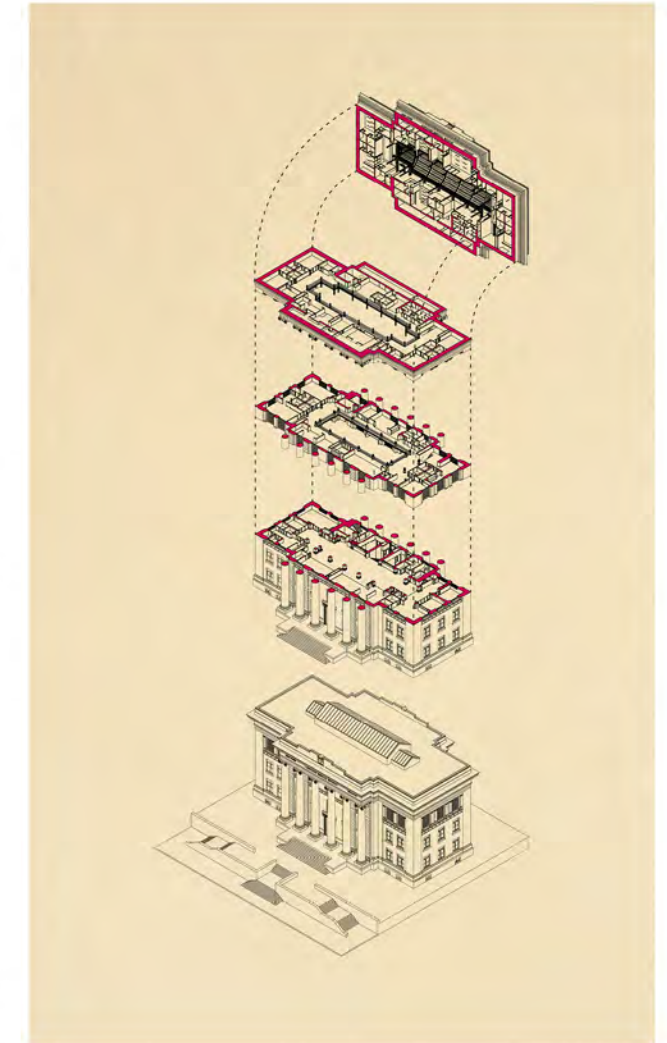




1906 - MEDICAL MUSEUM
Transparency + Natural Light



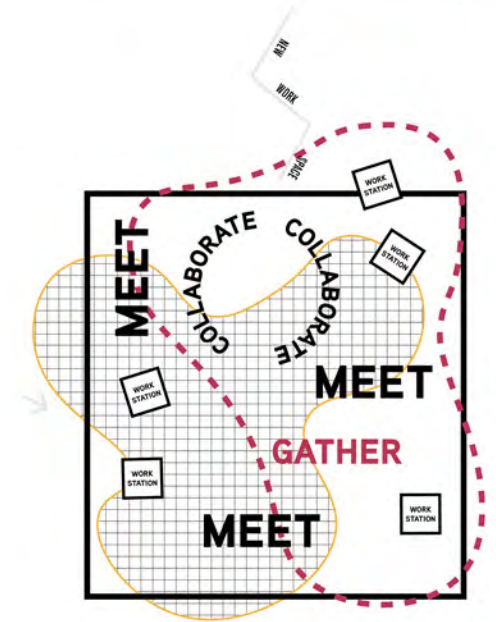
1940'S - POST-WAR RENOVATIONS
Compartmentalized + Dim



RADIOGRAPHY FOR RENEWAL

Like an X-ray revealing hidden structures beneath the surface, the transformation stripped away layers of enclosed office partitions to expose the original skeletal framework of the medical museum, reintroducing light and transparency to support a modern, open work environment.

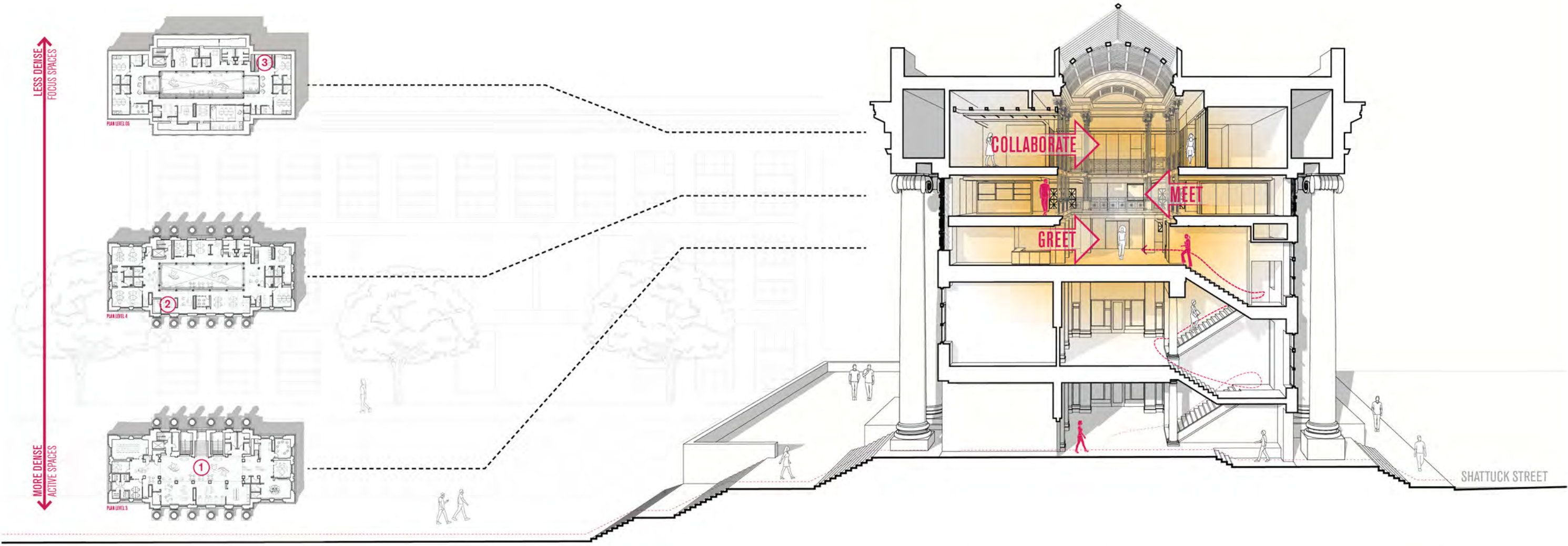




FLEXWORK NEIGHBORHOODS

The adaptive reuse of this historic building transforms it into a contemporary flex-work environment by inserting a series of standardized office modules throughout the existing structure. These modules—varying in size and outfitted for different work styles—are strategically combined to form “neighborhoods” within the larger architectural fabric.

The modular approach allows the historic spatial qualities—tall ceilings, original windows, and generous circulation corridors—to remain legible, while enabling a flexible, scalable model of occupation that can evolve over time.



MORE DENSE
ACTIVE SPACES

LESS DENSE
FOCUS SPACES



FINISH SELECTION

The design integrates strategies that support well being, resilience, and adaptability in times of need. Flexible furniture systems and adaptable layouts allow rapid reconfiguration for distancing or emergency use. Materials were selected for low emissions, durability, and long-term maintainability—supporting both environmental health and operational resilience. Through a rigorous and inclusive selection process, the design reflects a thoughtful balance of flexibility, functionality, and user well-being—positioning HMS at the forefront of hybrid workspace planning for all walks of life.

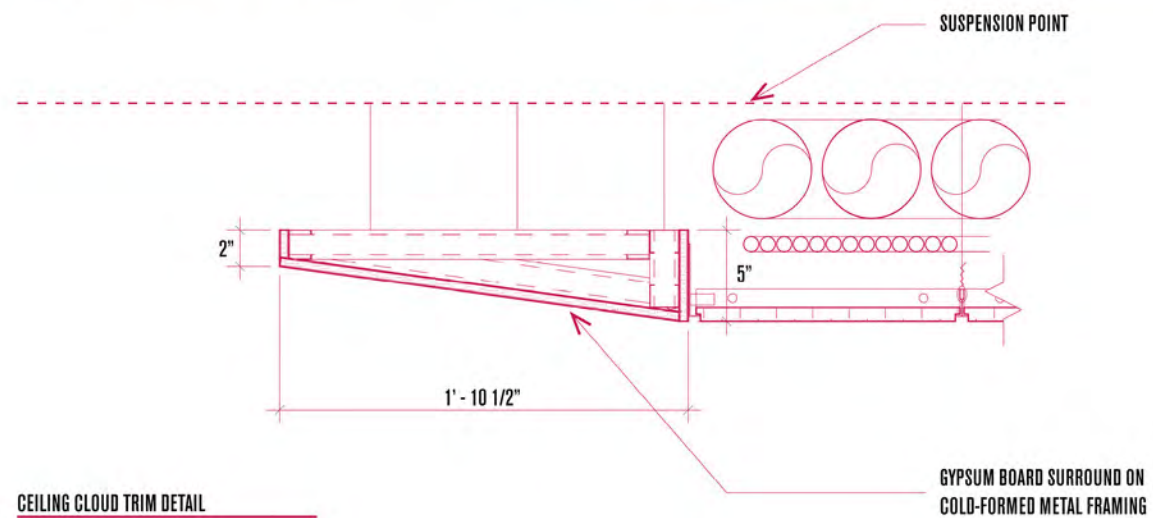


OPEN CIRCULATION —→ INFORMAL MEETING

The atrium circulation **restores access to natural light and outdoor views—elements that were lost when the original medical library was enclosed.** Acting as a vertical connector and spatial anchor, the atrium not only enhances wayfinding but also fosters a sense of openness and connection throughout the building.

The removal of post-war partitions, which had fragmented the building's interior, reestablishes a visual and spatial dialogue between floors. This reconnection allows a new interpretation of workplace connectivity, where open circulation and blended program encourage informal encounters and a more cohesive office community.

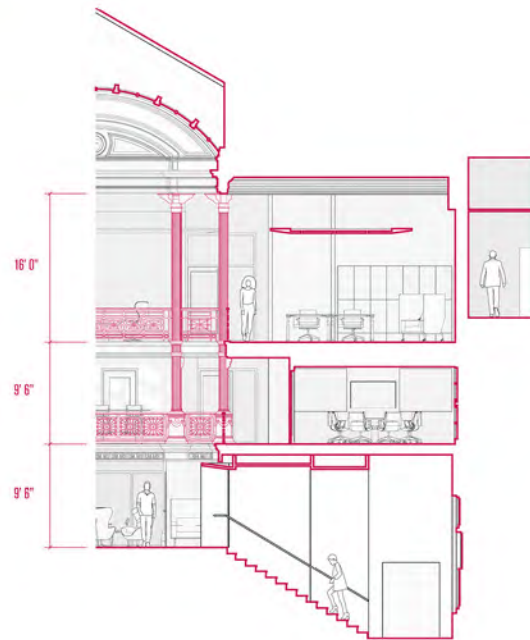
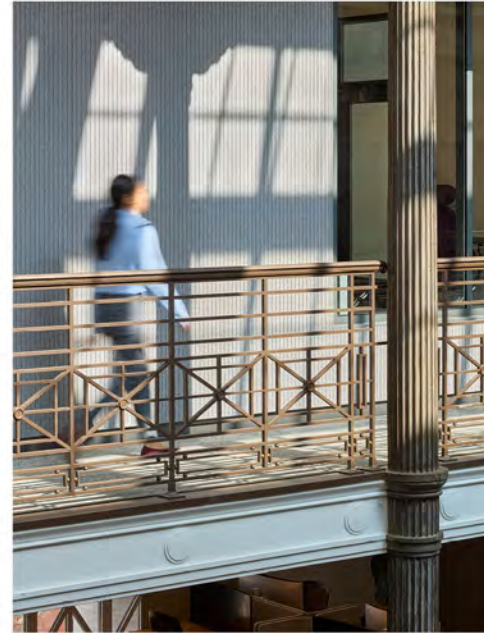




CEILING CLOUD TRIM DETAIL

Circulation zones are intentionally widened and programmed to encourage informal meetings, spontaneous collaboration, and moments of pause, supporting the flexibility and adaptability central to the project's work culture.

Ceiling clouds cleverly conceal mechanical systems while simultaneously shaping spatial rhythm and intimacy. Suspended above the open plan, they define zones for collaboration, focus, and circulation, establishing a clear sense of place and hierarchy without the need for traditional walls or enclosure.



NEW LIFE TO HISTORIC FEATURES

The original cast iron handrails were meticulously restored, their ornate details preserved, while subtle, surgical additions were seamlessly integrated to bring them into modern compliance—honoring the past through the sustainable preservation of a historic function.



