

53215709\_RESIDENTIAL



The Johnson House is perched on a steep north-facing slope on the south edge of Montreat Cove. The house parallels the topography to create a space between the house and the mountain and frame long views of the Graybeard ridge two miles across the cove. The form and color palette for the house are informed by the Scottish blackhouse, a favorite precedent of the client. Material choices respond to a rich local tradition of building with river stone and wood, specifically shingle cladding. The modern form possesses a strangely familiar aesthetic that hides in the shadow of the mountain side.

plan



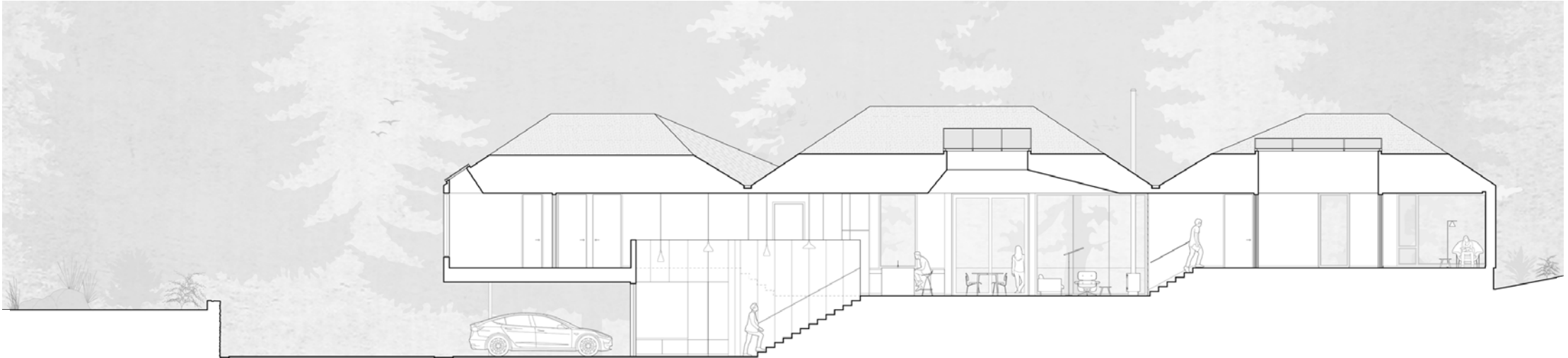
The plan is slightly out of parallel with the topography, allowing the house to climb the hillside a small amount from the entry under the secondary bedrooms to the primary bedroom suite. The main living spaces are in the middle of the plan and open to a patio between the house and the mountain and a deck high above the mountain.

- 01 drive
- 02 entry below
- 03 kitchen
- 04 dining
- 05 living
- 06 deck
- 07 patio
- 08 garden
- 09 primary bedroom
- 10 primary bathroom
- 11 primary closet
- 12 laundry
- 13 scullery
- 14 WC
- 15 office
- 16 guest bedroom
- 17 kid's bedroom
- 18 shared bathroom
- 19 workshop below





The house is sheltered by three simple hipped roofs that echo the form of the mountains. Skylight openings carve into the thick poche of each hipped roof to admit light into the main spaces.



long section



short section



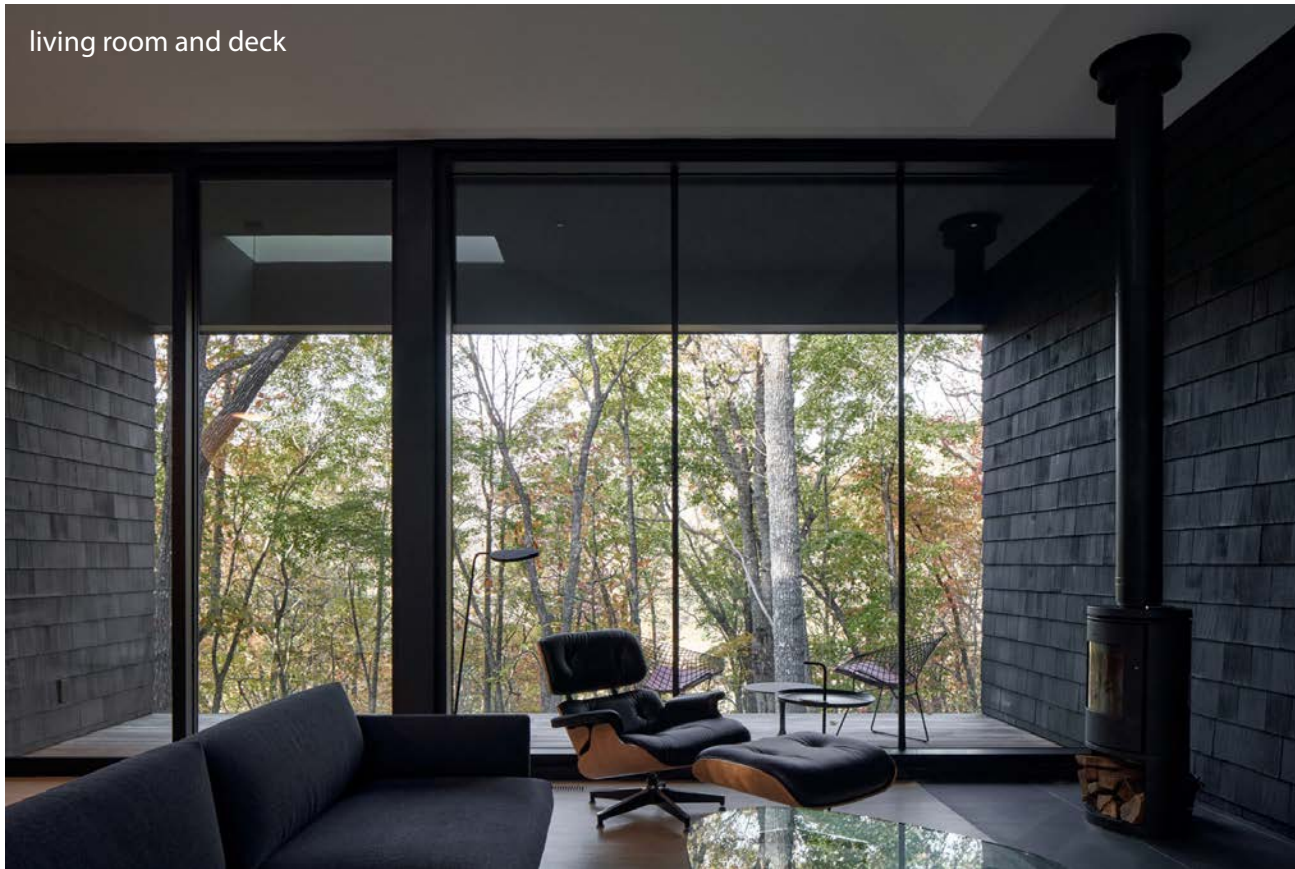
The thin west end of the house faces the street to minimize the presence of the house on the beautiful mountain site. Cut and fill are balanced to make a space between the mountain and house to the south and offer elevated views from spaces along the north wall. In the main living spaces, this creates the sense of simultaneously being within and floating above the mountain.



Arrival occurs through the lower level carport, with an indoor/outdoor stair offering a choice between going inside to the living room or staying outside to the patio. The living space has a sculpted ceiling, a long skylight, and window walls opening to the buried patio and elevated deck. The patio view is of a massive wall faced with traditional river stone. The deck view is of the distant mountain ridge. Exterior siding folds into the space to establish the full material palette in this most important space.



living room and deck



deck



patio



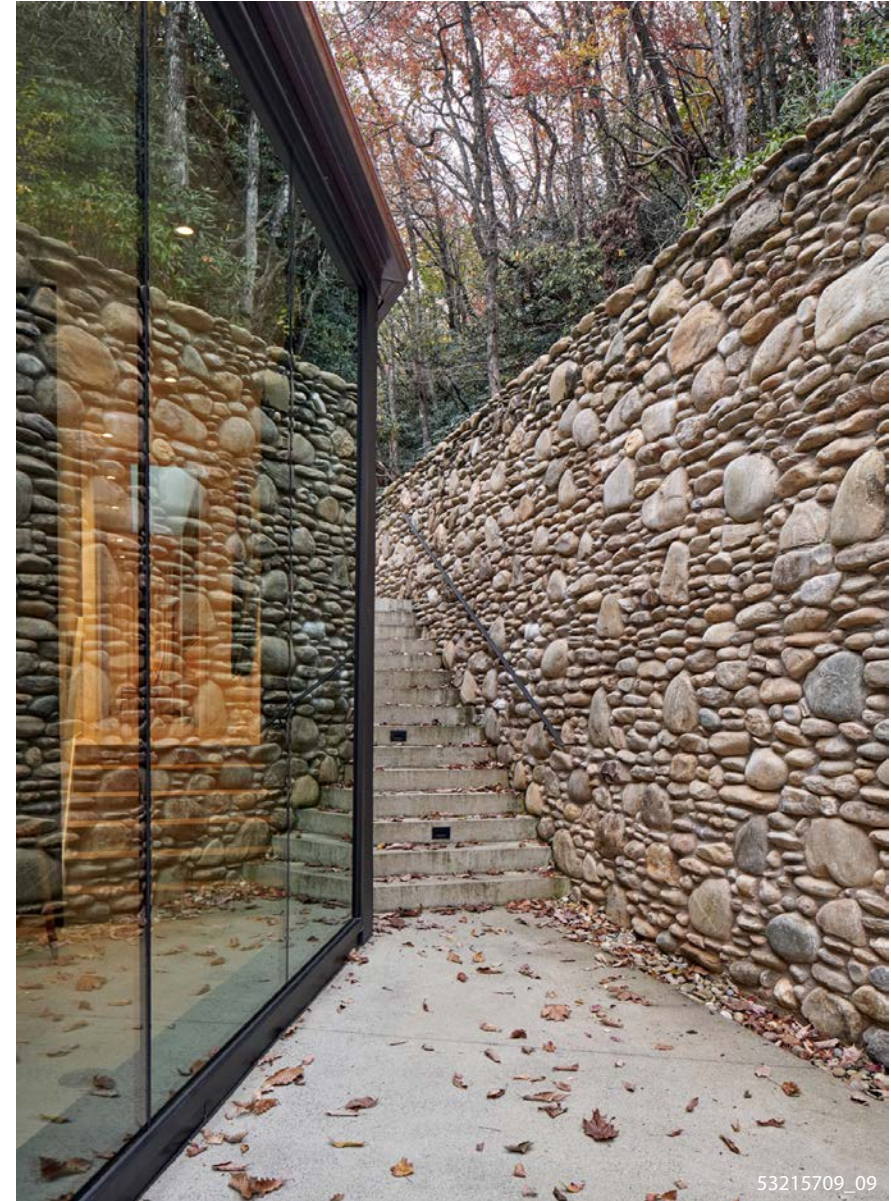


A book-filled hallway leads to the primary bedroom suite, elevated slightly above the living spaces, further up the mountain. Bookshelves slip into the bedroom, the northeast corner of which is open to the forest.



Secondary bedrooms are on the other end of the house, behind the kitchen and also slightly elevated to make clearance for the carport and workshop below.

The hall leading to the secondary bedrooms is parallel to the entry below, making a space to sense the full sectional complexity of the house. An upper exterior stair from the patio continues the journey up the mountain, allowing the owners to traverse the full slope of the project and access forest trails.





from the east



three hips



carport



from the north