

53202367

RAVENS CROFT SCHOOL

OLANDER CENTER FOR STUDENT LIFE
AT THE A.E. FINLEY ACTIVITY CENTER

RALEIGH, NC

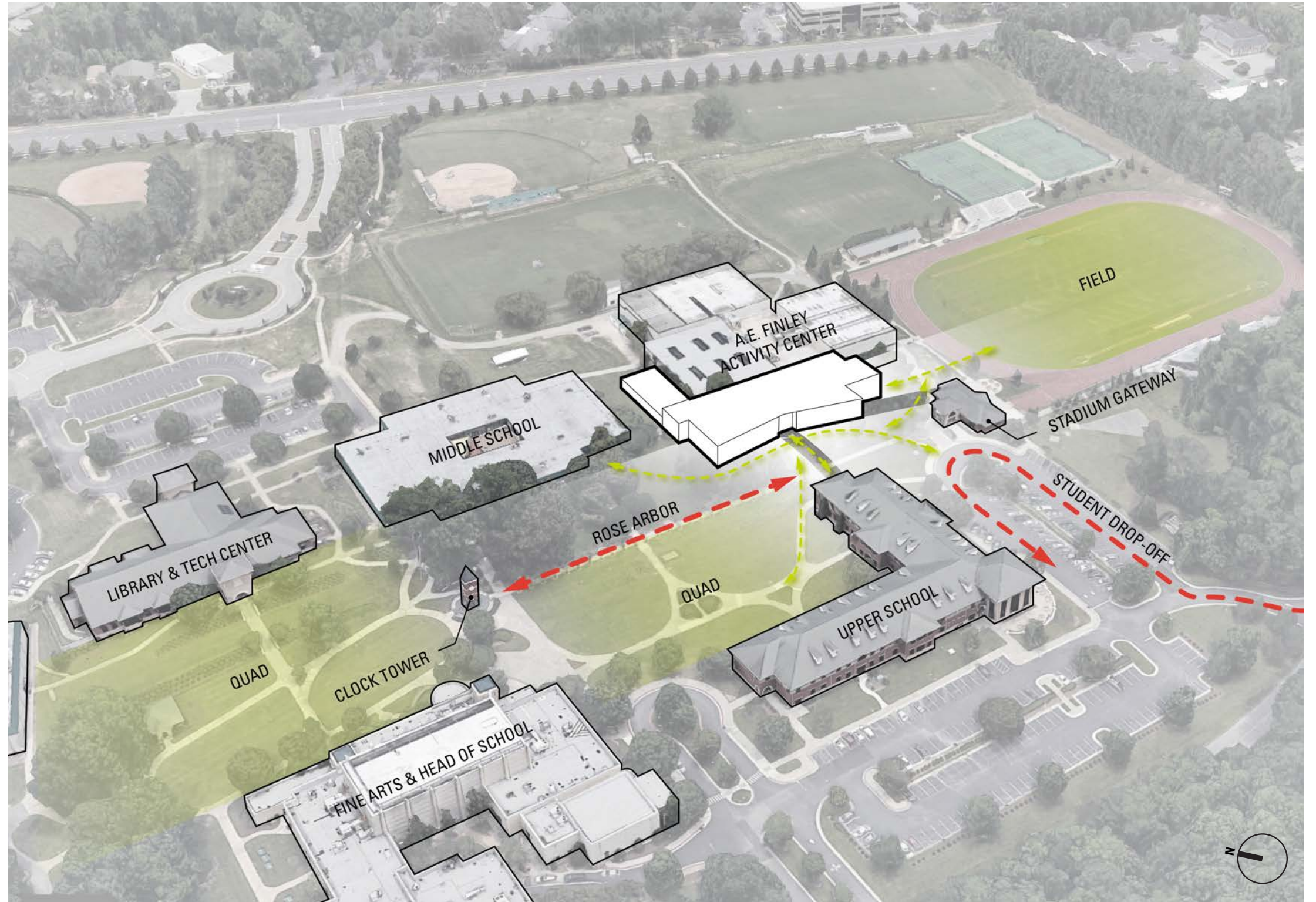
OLANDER CENTER FOR STUDENT LIFE



SITE AND CAMPUS CONTEXT

Located at the intersection of academics and student activities, the Olander Center for Student Life strengthens the school's collaborative mission while respecting the fabric of its celebrated landscape. The addition creates a new front face to the existing A.E. Finley Activity Center, which supports school sporting events and physical education programming, and provides direct connections to outdoor spaces at the heart of campus life.

One of the campus's most sacred spaces is the Rose Arbor - a pedestrian corridor vaulted in rose bushes that connects the campus clock tower to the football stadium. The path hosts graduation processions and other important milestone events. The new student life center steps back from the arbor and opens its arms to this important corridor, creating an outdoor living room in which to terminate this important campus axis.



CAMPUS DIAGRAM



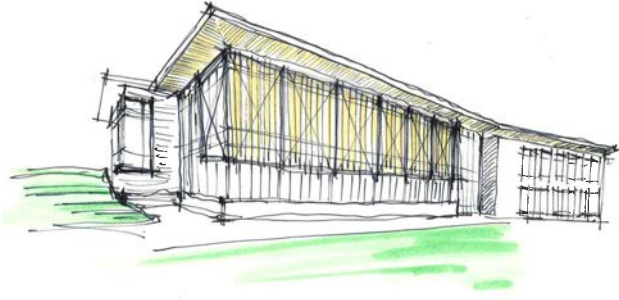
BEFORE



AFTER

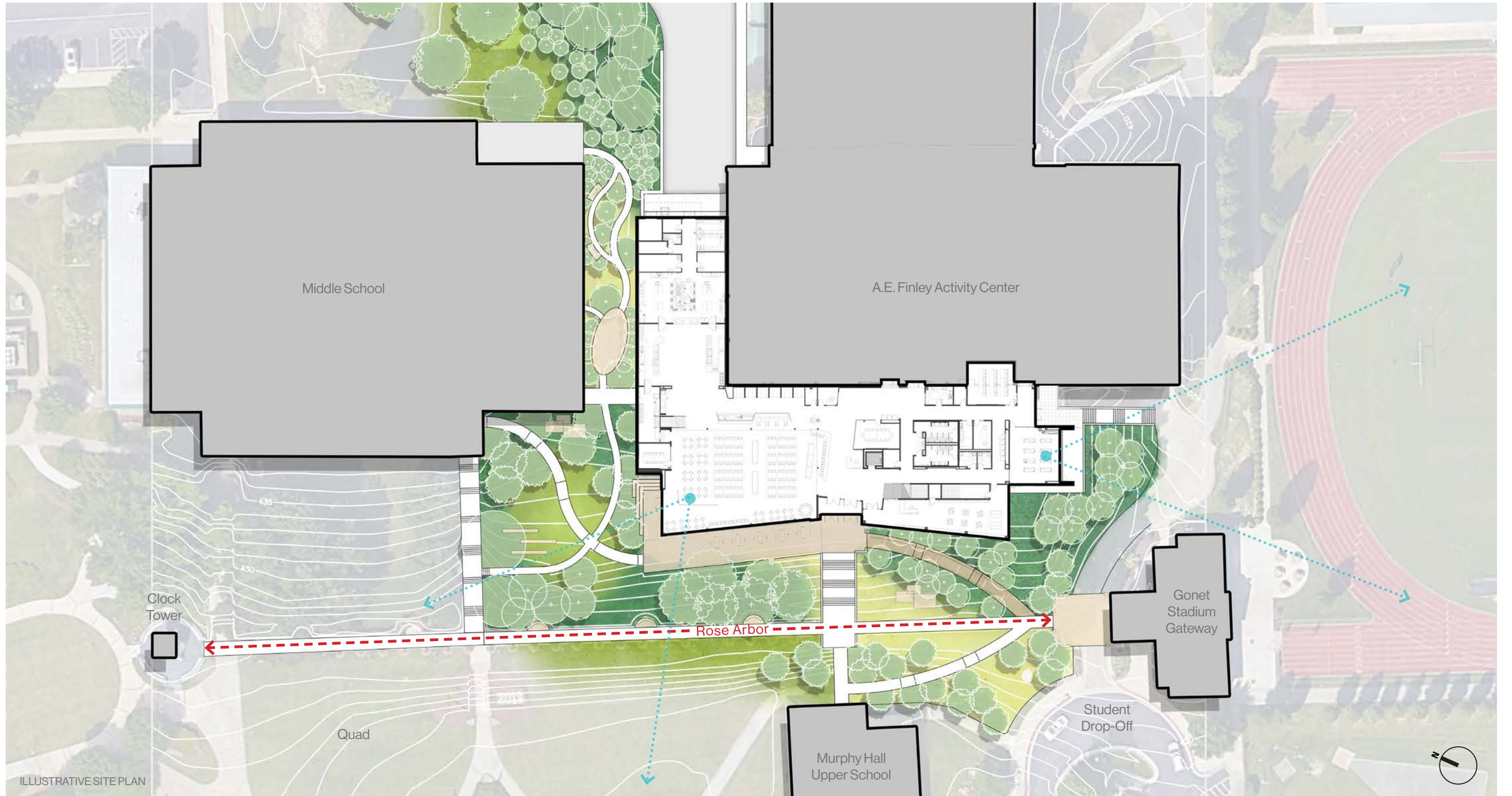
WELCOMING FORM

The west-facing facade subtly responds to the flow of natural pedestrian movement and emphasizes transparency to welcome students and visitors, as well as provide unobstructed views from the communal interior spaces to many of the campus's sacred nearby buildings and outdoor spaces.



SHADE AND TRANSPARENCY STUDY SKETCH



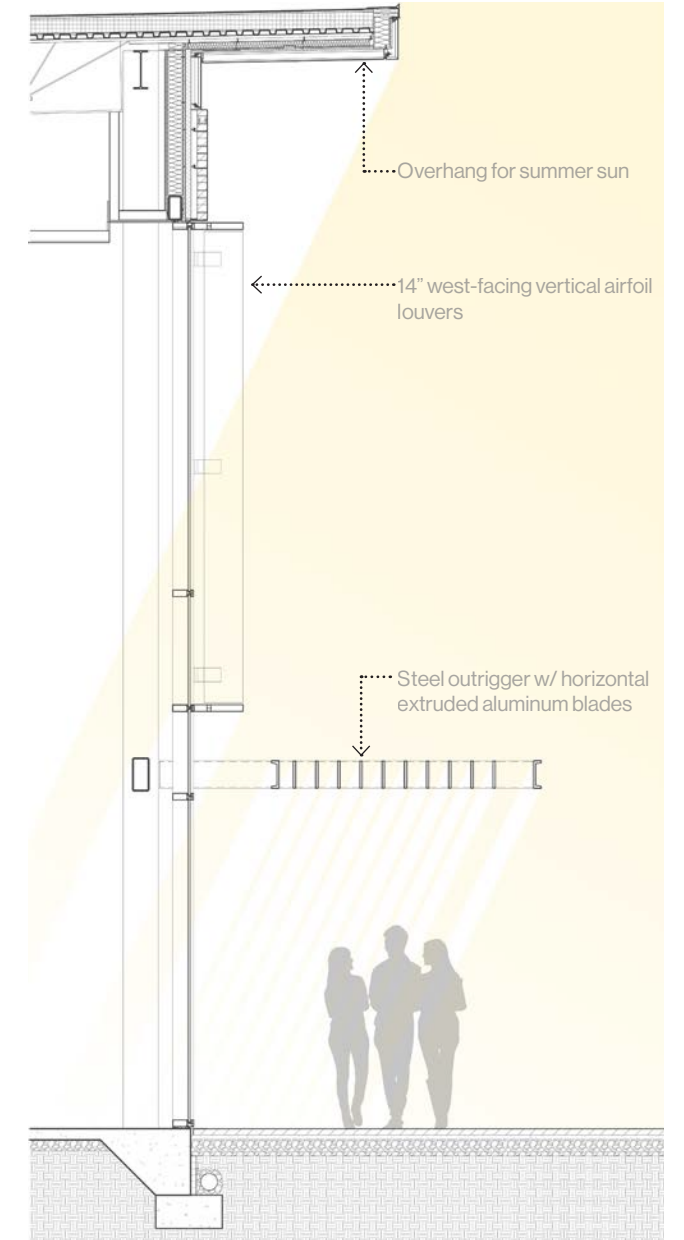


ILLUSTRATIVE SITE PLAN



INFORMED FACADE

A detailed solar and energy analysis informed the design of the west-facing facade and roof projection, which creates both a visual rhythm and afternoon sun protection for the study and dining spaces inside.

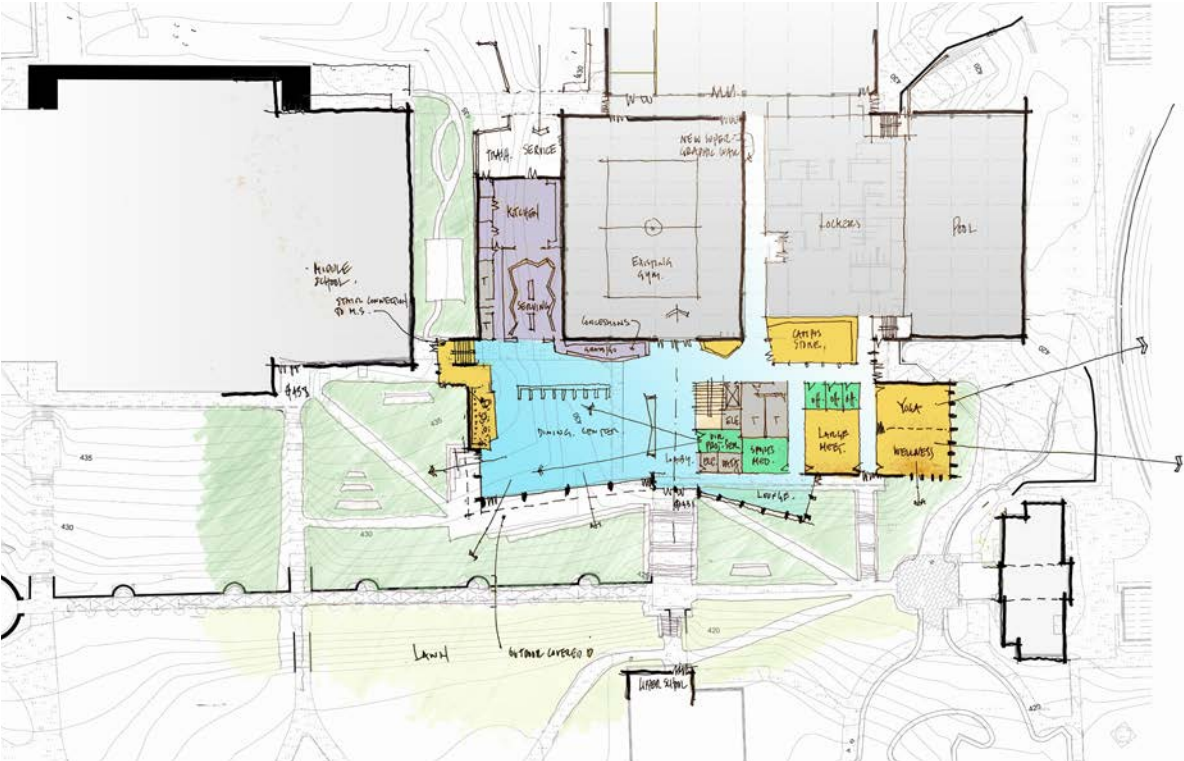


WALL SECTION AT DINING



VISUAL CONNECTIONS

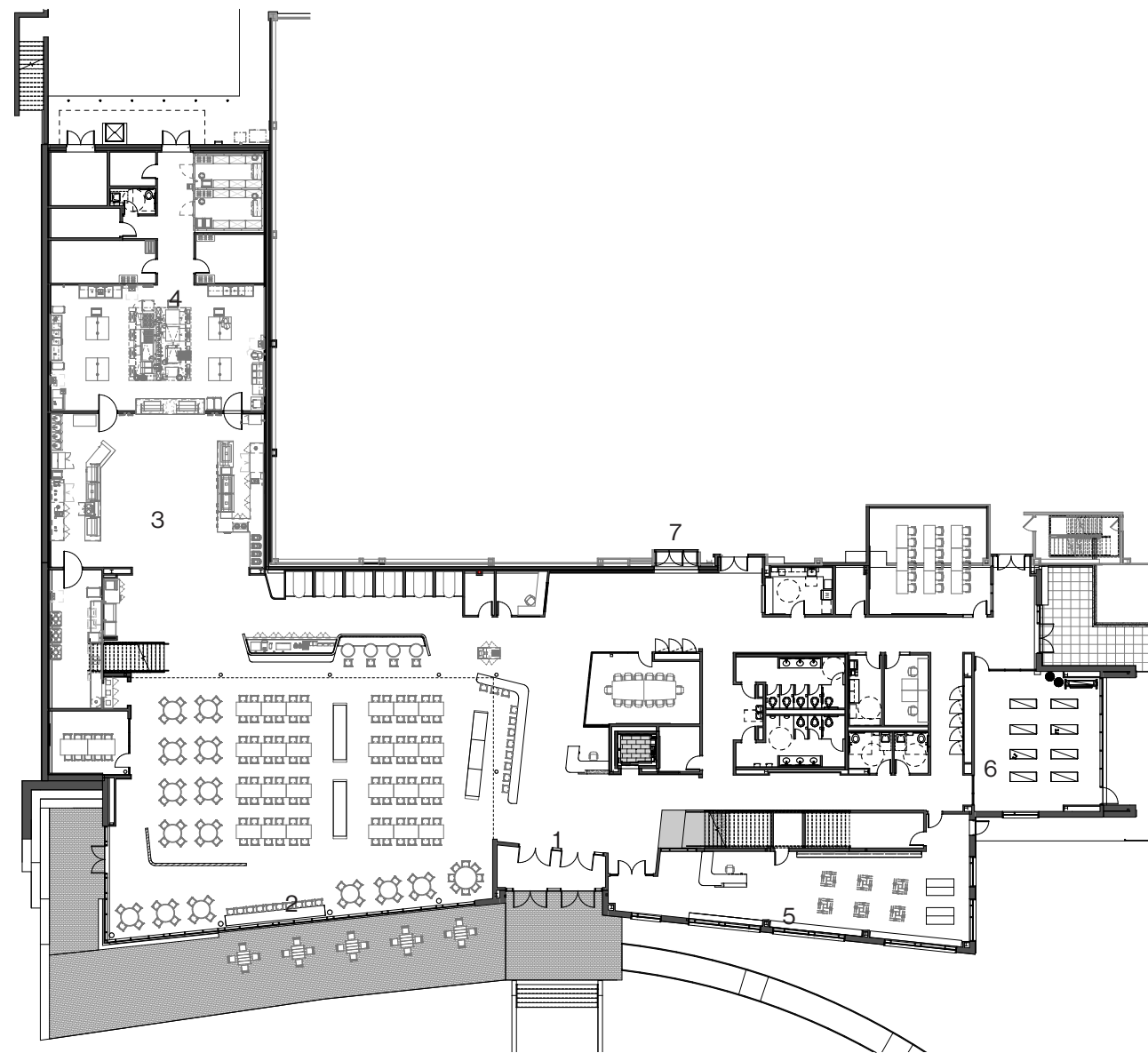
A highly articulated west facade allows controlled natural light to fill the dining space while minimizing glare, and provides visual connectivity to the landscape of the surrounding campus. A detailed solar and energy analysis informed the design of the west-facing facade and roof projection, which creates both a visual rhythm and afternoon sun protection for the study and dining spaces inside.



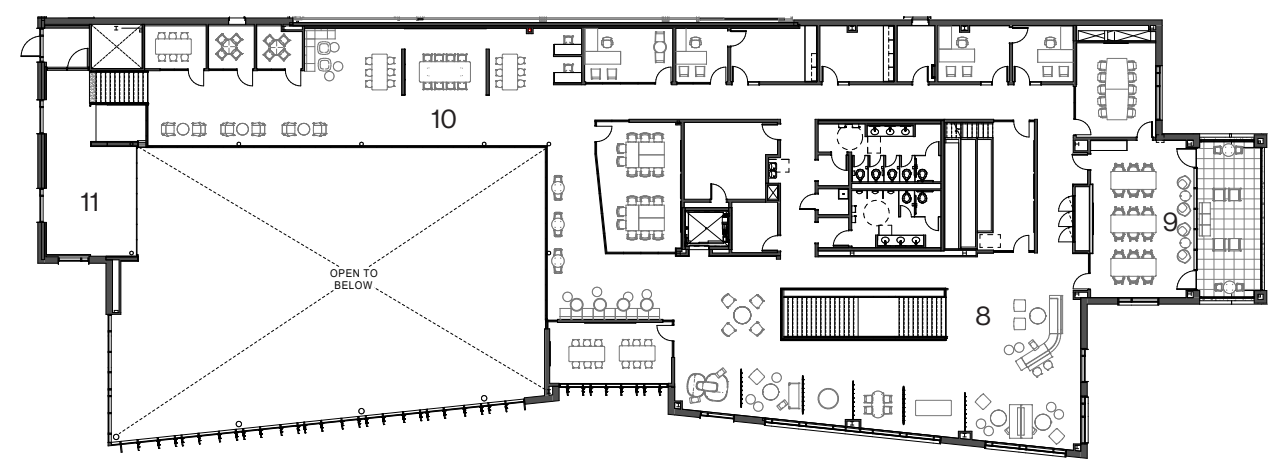
STUDY SKETCH OF VIEWSHEDS AND CAMPUS PATHWAYS

FLOOR PLANS

- 1 Lobby
- 2 Dining
- 3 Serving
- 4 Kitchen
- 5 Ravenzone
- 6 Wellness
- 7 Existing A.E. Finley Gym
- 8 Lounge
- 9 Hall of Fame
- 10 Study
- 11 Platform



FLOORPLAN - LEVEL 01

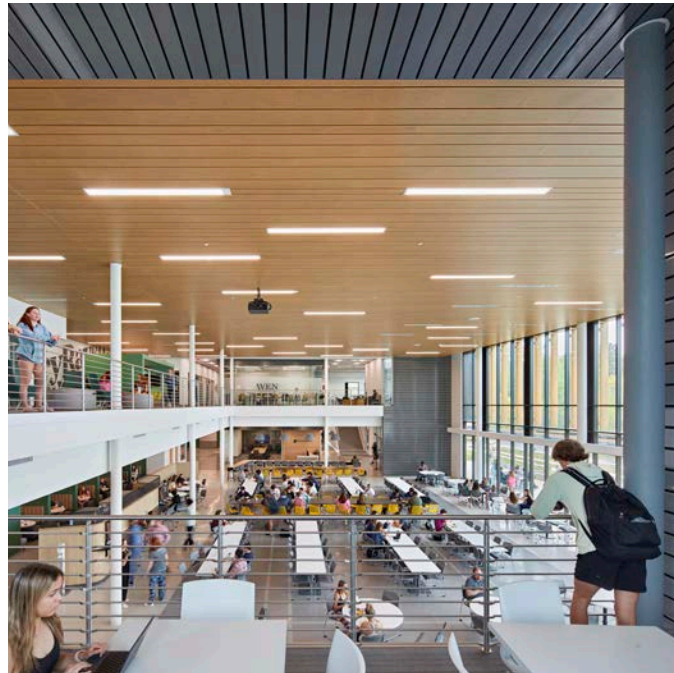


FLOORPLAN - LEVEL 02

DINING + WELLNESS

The interior design incorporates a harmonious blend of natural materials, such as wood, stone, and sustainable finishes. This selection not only adds warmth and texture but also complements the transparency by grounding the space in nature-inspired elements. The color palette is inspired by warm and earthy tones that evoke feelings of comfort and familiarity. Soft, warm lighting fixtures are strategically placed to cast a warm glow throughout the space.

At the heart of the student center, a double-height dining and social space serves as a central hub for gathering, dining, and events. A variety of seating options, integrated learning spaces, and connections to the upper level keep the building active day and night. Half-level student lounges and study areas provide indoor-outdoor links to the sloped landscape, fostering relaxation and community.





WELLNESS & INCLUSIVIST SPACE

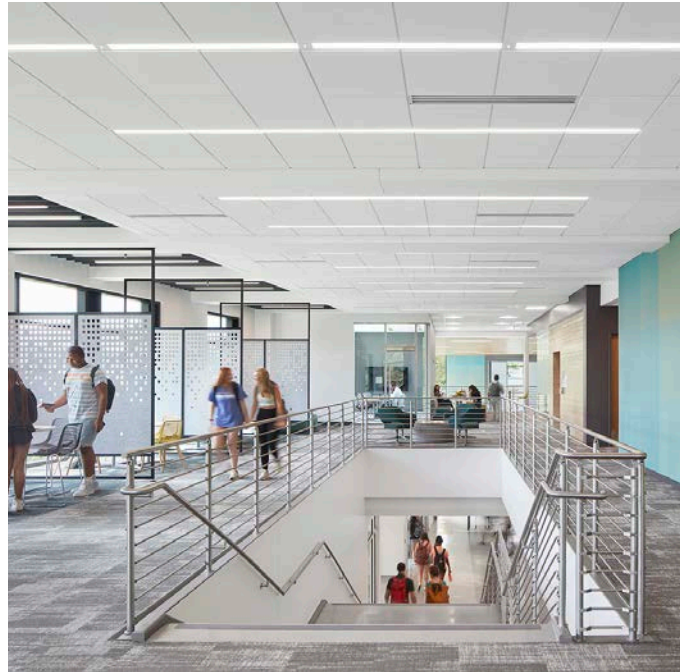
Abundant daylight, facilitated by the transparent facade and strategic layout, promotes a connection to the outdoors and enhances circadian rhythms, positively impacting physical and mental health. Open collaboration zones encourage interaction, fostering a sense of community and belonging. The incorporation of diverse study and social spaces accommodates various learning and working preferences, promoting comfort and productivity. The center's integration with the surrounding ecosystem and access to outdoor areas invite physical activity and relaxation, bolstering mental and emotional well-being. By focusing on these elements, the design translates into an inclusive, health-oriented space that nurtures the comprehensive well-being of all individuals who engage with it.

Open collaboration zones and visual connections encourage student, faculty and parent/guardian interaction, reinforcing the school's foundational values rooted in diversity, equity, inclusion and belonging. To reinforce the building's role as a space for all students, study spaces are positioned throughout to offer orchestrated views back to the upper and middle schools, as well as the bucolic canopied landscape.



TRANSPARENCY

Every aspect of the design has been thoughtfully considered to create an environment that promotes openness, connectivity, and transparency. The exterior glass facade allows natural light to flood the interiors while blurring the boundaries between indoor and outdoor spaces.





LEARNING EVERYWHERE

Providing a wide variety of study and social spaces was a key goal for the client, as the campus was starved for these types of spaces elsewhere on campus. Though centered around the dining hall anchor, the design team imbued circulation spaces with the width and detail to accommodate several types of study and collaboration environments.





CLAYTON CENTER BUILDING

AE FINLEY ACTIVITY CENTER