

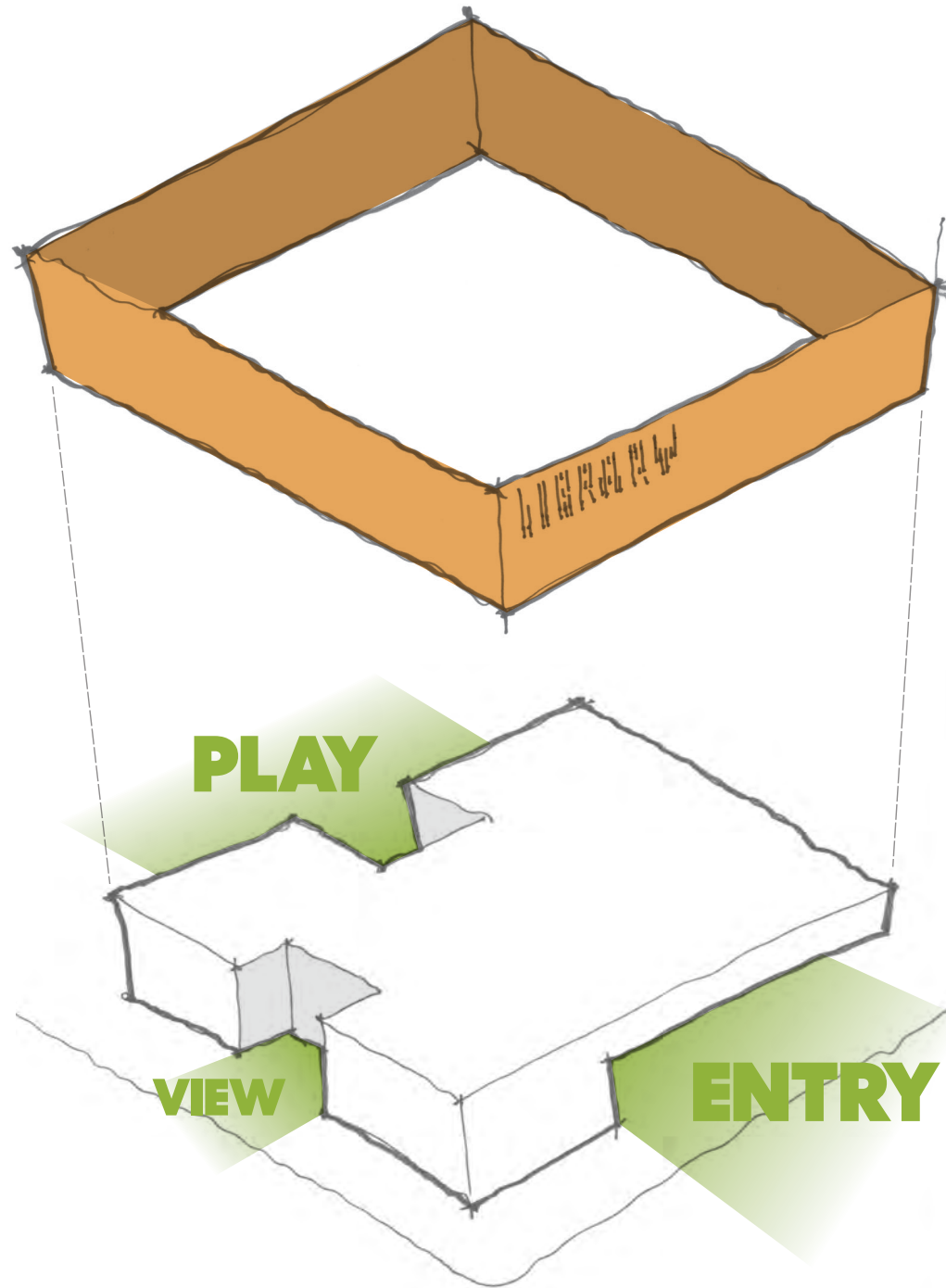
**53280127**



1022

14000





## Community Beacon

In a context of place-less sprawl, the library is a landmark at center of its Cleveland neighborhood with a memorable public-facing facade - identifying authentic place.

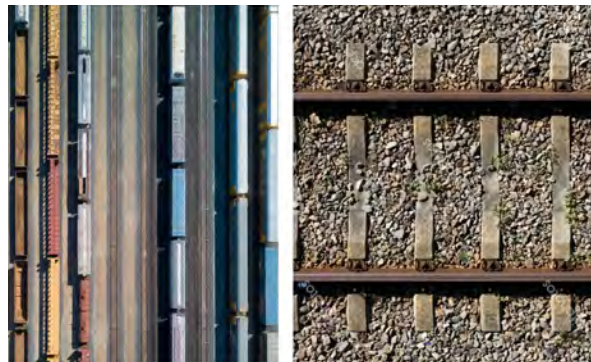
Strategic curves create space for entry, outdoor play and curated nature views.

## Neighborhood Stewardship

Pursuing LEED Silver

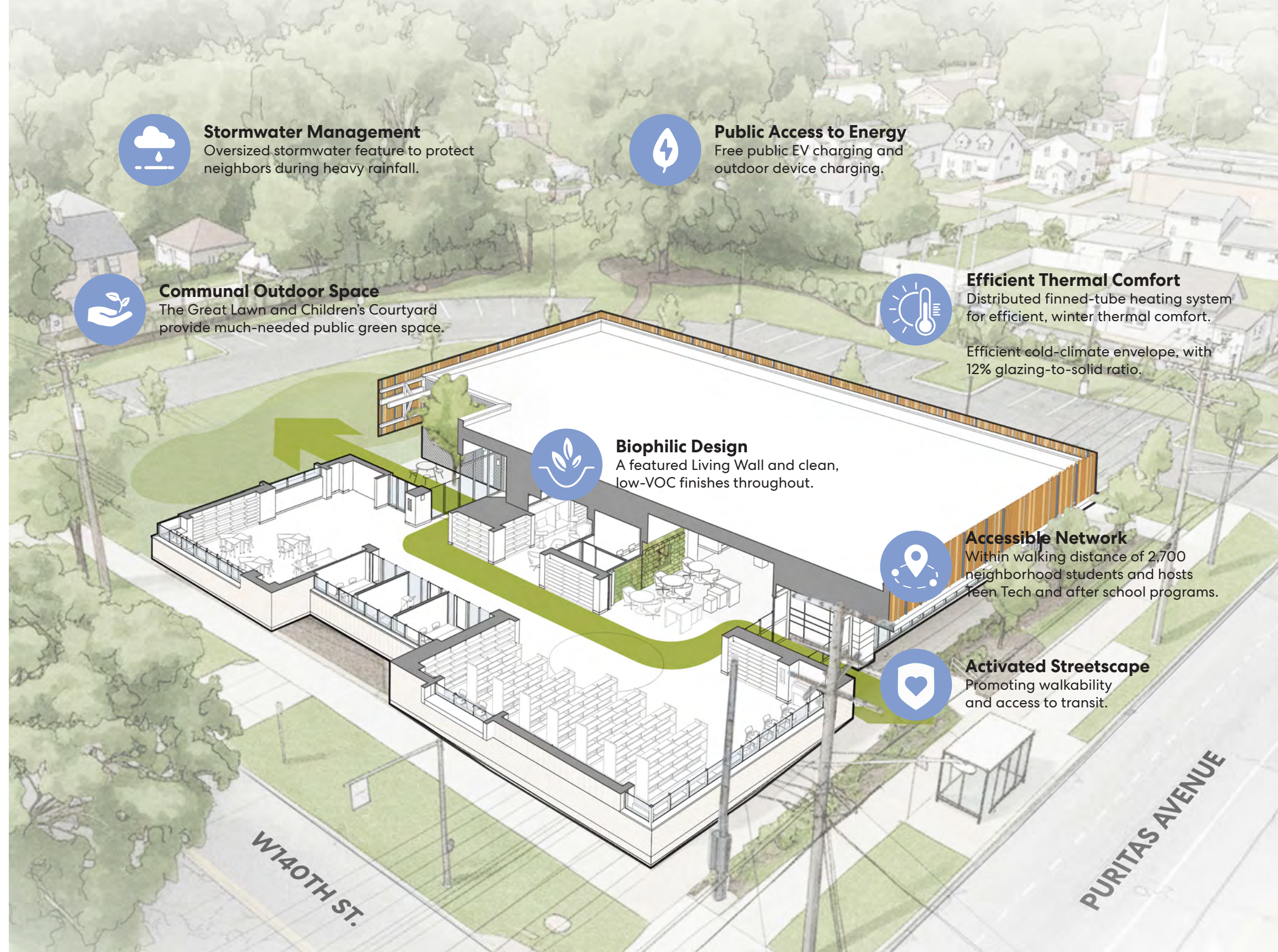
### Marquee

Inspired by the nearby historic Variety Theater, the library's facade helps create a landmark to provide identity to the Bellaire-Puritas neighborhood.



### Rust Belt Roots

The exterior palette draws on the neighborhood's industrial past, connecting to its 'culture of makers.' Economical yet durable façade materials—brick, metal panel, and limited glazing—recall the legacy of Cleveland's railroad yards, steel mills, and industrial manufacturing base.



#### Stormwater Management

Oversized stormwater feature to protect neighbors during heavy rainfall.



#### Public Access to Energy

Free public EV charging and outdoor device charging.



#### Communal Outdoor Space

The Great Lawn and Children's Courtyard provide much-needed public green space.



#### Efficient Thermal Comfort

Distributed finned-tube heating system for efficient, winter thermal comfort.

Efficient cold-climate envelope, with 12% glazing-to-solid ratio.



#### Biophilic Design

A featured Living Wall and clean, low-VOC finishes throughout.



#### Accessible Network

Within walking distance of 2,700 neighborhood students and hosts Teen Tech and after school programs.

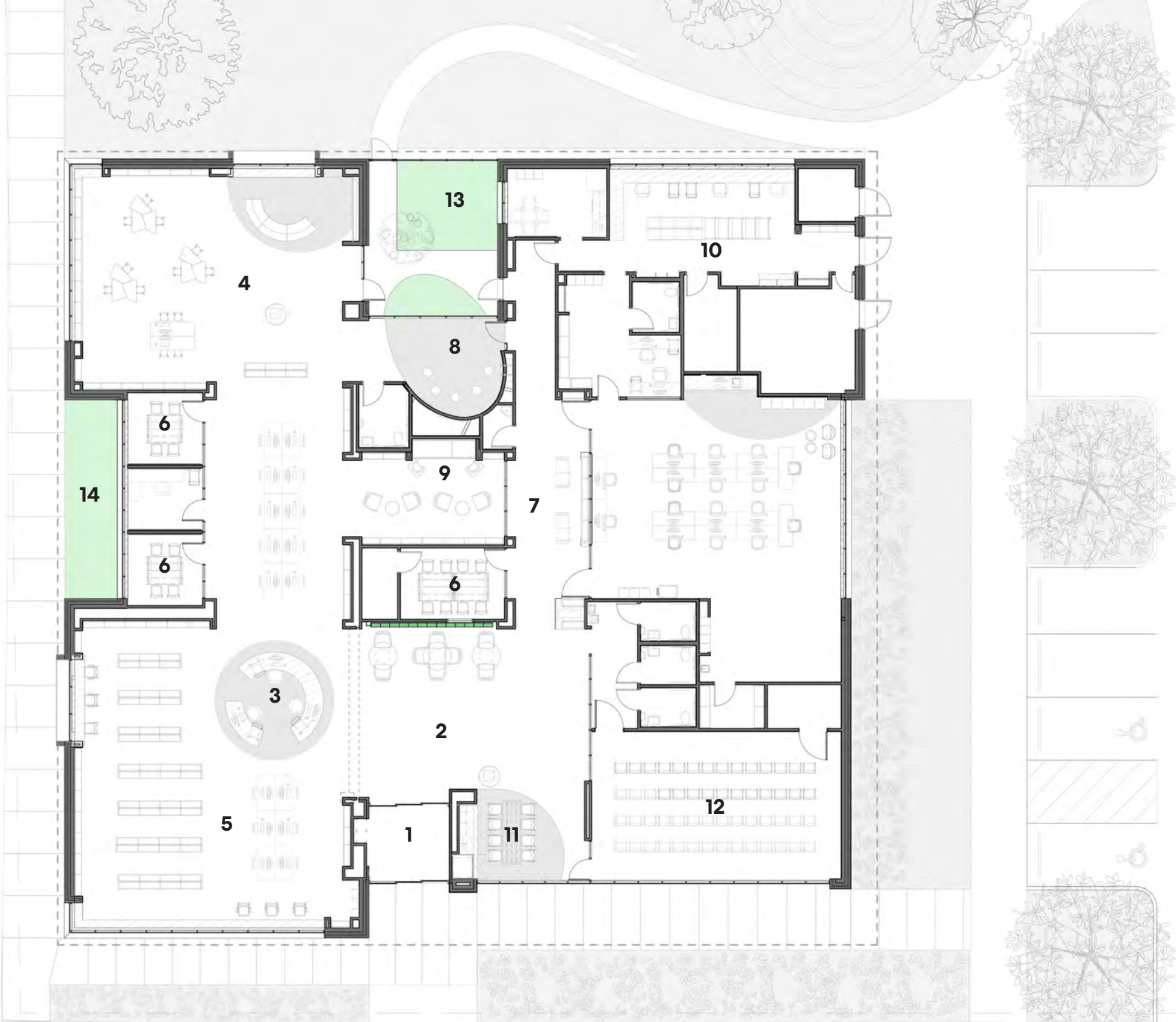


#### Activated Streetscape

Promoting walkability and access to transit.

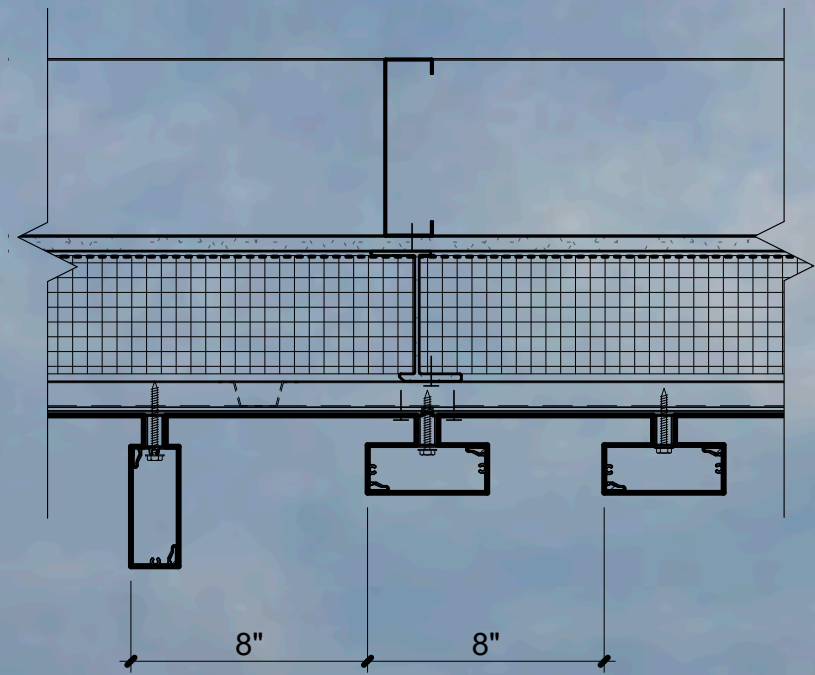
# Floor Plan

- 1. Entry
- 2. Marketplace
- 3. Circulation Desk
- 4. Children's Services
- 5. Adult Learning
- 6. Group Study Rooms
- 7. Teen Collections
- 8. Special Storytime
- 9. Quiet Reading
- 10. Staff Areas
- 11. Catering/Work Cafe
- 12. Community Room
- 13. Children's Garden
- 14. West Garden



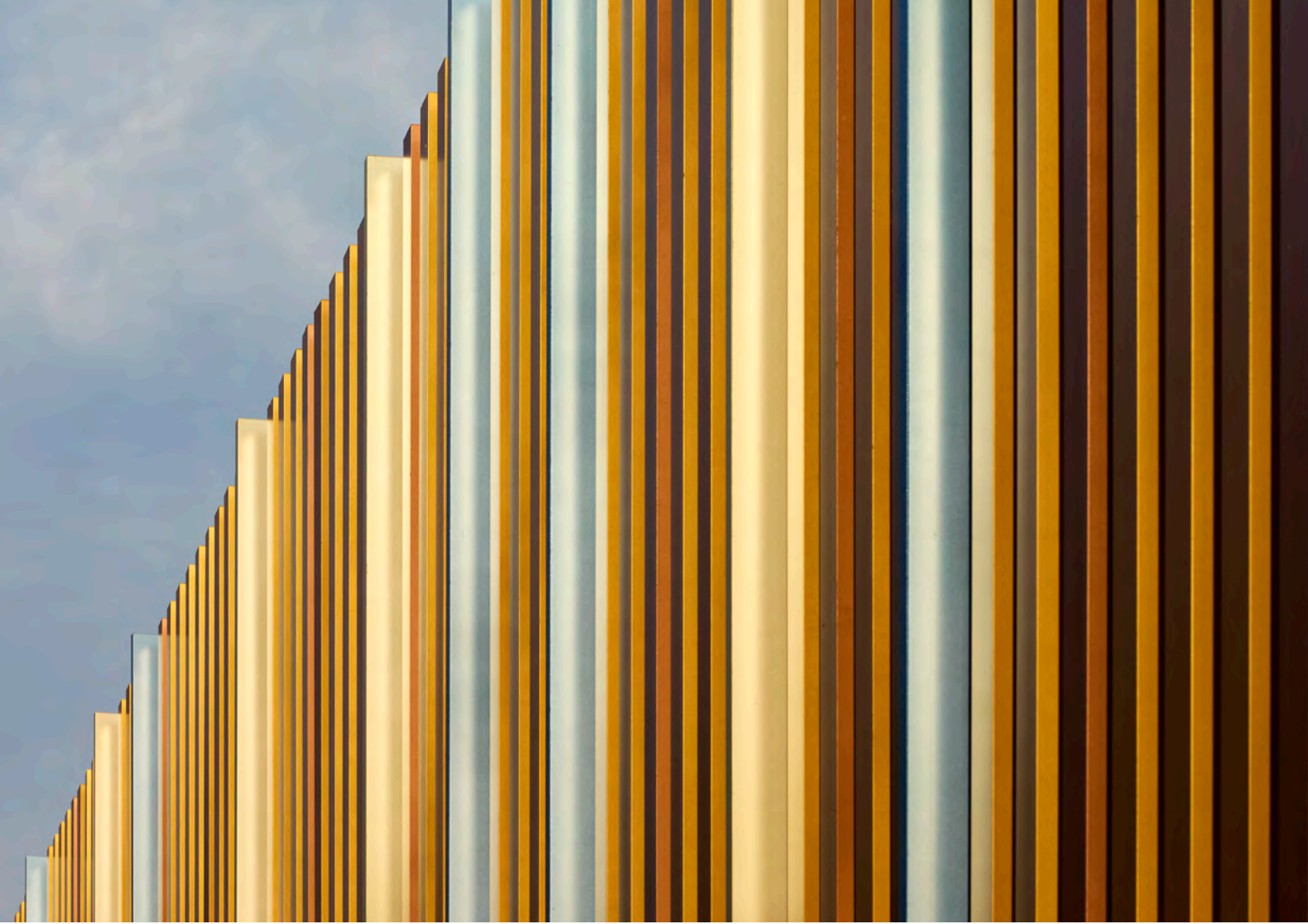
Entry from Puritas Ave





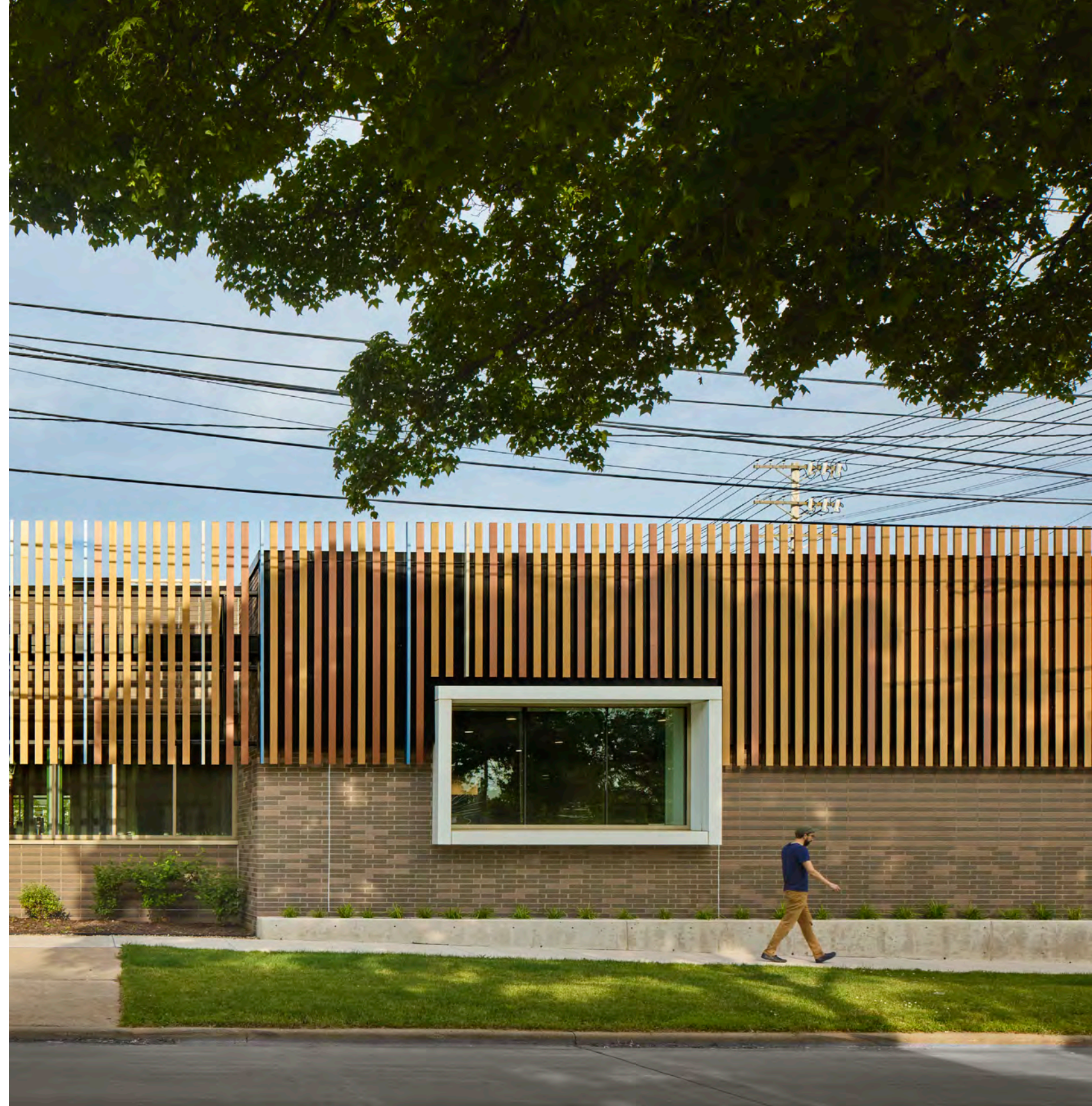
To deliver a complex facade system within budget, the team achieved variation through color and depth - constructed for **22% savings** over a standard route-and-return ACM metal panel system.

A simple ACM sheet was face-fastened to hat channels as backup, behind a snap-together L-shaped batten system set on spacers. The same exact batten can be attached on its flat side or end without modification.



West Elevation

Subtle shifts in brick coursing identify areas where the building mass has been 'carved' for openings and views.



Marketplace Entry



YOU ARE AT THE CENTER.



Children's Garden



Children's Storytime

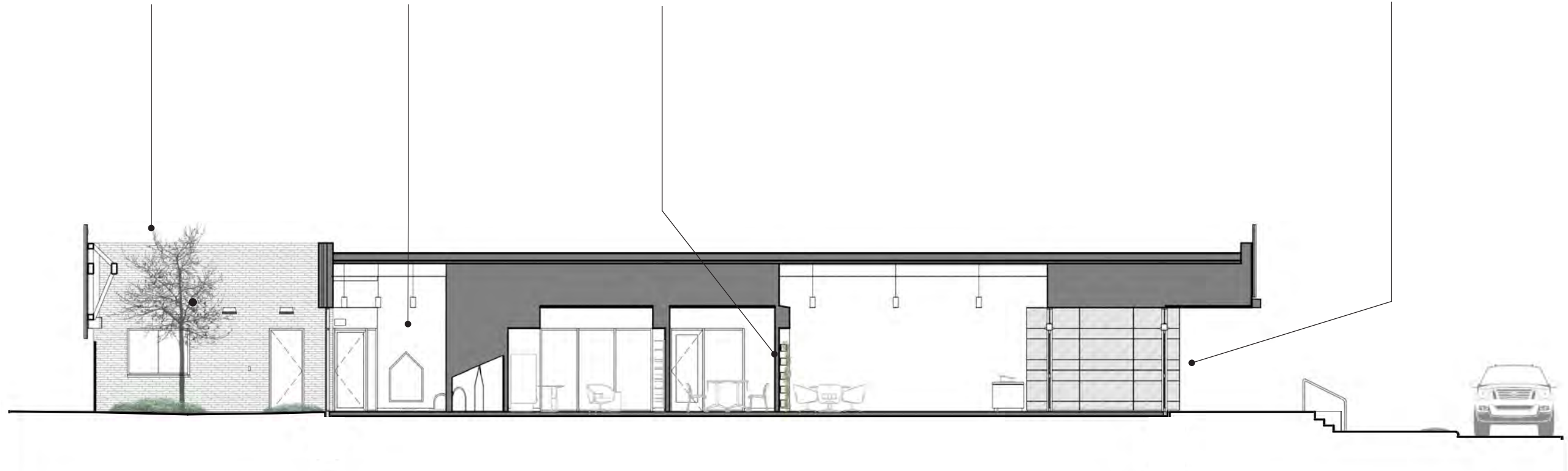


Living Wall

True to community feedback, the interior experience is framed by biophilic elements and natural materials that tie the entry experience with views back out to the landscape. A living wall is the backdrop to the Marketplace, providing a hint of outdoor connection beyond in the Children's Garden.



Blackened Steel at Entry



Section



20'



Tying back to Cleveland's 'culture of makers', a pegboard wall anchors both the children's space and teen makerspace. Teens can prototype toys and manipulatives with 3d printers and lasercutters for use in the Children's play zone.



Teen Tech Center

